

Physical Plant Operations (PPO)

Capital Design and Construction (CDC)

- ◆ The Surge Space Building is under construction by H. S. Williams of Marion, VA. This 45,000 GSF building will provide swing space for departments while their existing buildings are renovated. Construction is expected to be complete in the spring of 2007.
- ◆ The Graduate Life Center at Donaldson Brown was substantially complete in August 2006. This 106,000 GSF facility will house the administration for the Graduate School, upgraded residences for graduate students, as well as enhanced meeting rooms, lounges and health and fitness areas. This is the first facility of its kind in the U.S.



Lobby at the Graduate Life Center

- ◆ Customers should consider floor load ratings before moving heavy equipment (including loaded filing cabinets) into buildings on campus. This is especially important in older buildings on campus, where floor load ratings often are as low as 40 pounds per square foot. This figure is somewhat below ratings for more modern office space and considerably below the figure used to construct modern laboratories, storage space, and similar areas. PPO has found some common 4-drawer file cabinets with as much as 300 pounds of material in them over the years on campus. If one considers that the nominal dimensions of some cabinets are in the range of 15 inches wide by 24 inches deep (or 1.25 by 2 feet), this results in a "footprint" of 2.50 square feet. The resulting floor load for a cabinet loaded to 300 pounds could be as much as 120 pounds per square foot! This is an extreme case, but it does illustrate the need to consider the safe floor load for buildings on campus especially when changes of use are considered. For assistance in checking on acceptable floor loads, please contact Physical Plant Operations.
- ◆ PPO is pleased to announce the promotion of Diane Worrell to Customer Service Lead Representative. Diane brings a wealth of dispatching experience to her new position and a willingness to help in the many varied circumstances Facilities faces.

Utilities

Virginia Tech Electric Service (VTES)

- ◆ The Aquatics and Fisheries Facility received favorable bids. W.G. Simmons received the Notice of Award on September 21, 2006. Construction will start later this month. This facility will provide much needed research offices for the College of Natural Resources.
- ◆ Bids for the Building Construction Laboratory building will open on October 26, 2006. The new 30,000 GSF Building Construction Laboratory, located immediately north of Cowgill Hall, will house classrooms, offices, workshops and studios for the expanding Department of Building Construction.
- ◆ The VT Electric Service assisted in the completion of the West Side and East Side projects of Lane Stadium. Approximately 67 lights of various sizes and types were installed. The "hokie" lights on the East Side stadium also utilize the emergency generator utilized during night games.
- ◆ The equipment storage shed for Electric Service was completed which was designed for the storage of most of the towed equipment of the operation. Plans are to install shelving, identify equipment locations and transfer failed transformer storage to the facility to maximize the utilization of the facility. VTES equipment was rusting; wooden wire reels were rotting; and containment of leaking transformers were just some of the problems solved with the new facility.

Mechanical Utilities

- ◆ The Chilled Water Expansion project was substantially complete on September 13. Final punchlist items will be completed within 30 days. This project increased the chilled water capacity in the North Campus Loop to 7,060 tons.



Chilled Water Expansion Project

- ◆ The annual testing/flushing of approximately 120 fire hydrants across campus is complete.



Testing Fire Hydrants

Central Steam Plant

- ◆ The new air compressor installation is complete and both units of the compressor are operational.
- ◆ Repairs to the ash unloading system are currently underway.
- ◆ Assembly of the new Air Pollution Control system continues on Boiler No. 7.

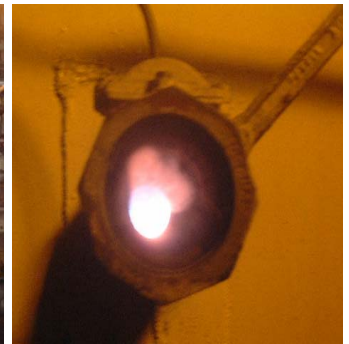


Construction of New Air Pollution Controls

- ◆ Burner calibrations on Boilers No. 8, 9, and 10 are nearly complete in preparation for the upcoming heating season.



Calibration of Boilers



Combustion during Testing

- ◆ The repairs and upgrades are also continuing on Boiler No. 11 and its associated Air Pollution Control system.
- ◆ Coal is being stocked in the plant's coal yard to supply the large coal boilers, one of which is scheduled to come on line this week.



Stocking Coal

Campus Renovation Services (CRS)

- ◆ The Classrooms Improvements – Phase I project involved full interior renovation and enhancement to eight university classrooms located at Litton-Reaves Hall, Smyth Hall, Seitz Hall, Derring Hall, Randolph Hall, and Holden Hall. Room modification included a full interior demolition, with new walls, ceilings and carpet, as well as integrated lighting, and window shades. For students, these improvements will enhance their environment and make it more conducive for learning by providing improved lines of vision, adjustable room and natural lighting through motorized shades and sound system. The instructor's podium will now be his/her focal point with an integrated touch screen giving control over lighting, projection systems, window shades and audio-visual teaching aids, such as laptops, overhead projection, video and DVD players, all with amplified sound system. The classrooms also have the capability to support distance learning through video conferencing. The Office of the University Architect, Capital Design, Campus Renovation Services and the University Registrar - truly a TEAM effort - jointly managed this \$1.4 million project.



Improved Classroom

- ◆ CRS completed approximately 3,000 square feet of Squires Hall for the fall semester to facilitate the department's goal of providing an appropriate and more accessible space to accommodate Multicultural Programs and Services (MPS) and the Multicultural Center (MCC). Improvements and alterations to the space included new partitions and doors, finishes, fire suppression system, lighting and HVAC. Expansion of the existing Multicultural Center allows a larger seating capacity for events while maintaining the student computer lounge. New doorways in the old walls give direct connection between the MPS and the MCC, but still permit the shared spaces security to one side or the other. Accent colors on special walls and track lighting to highlight proposed artwork were two amenities added by this renovation. In the Student Affairs facility, an office suite

was built providing four new private offices, reception area and support spaces. A new break room and conference room was added to be shared by the MPS and the MCC.



New Reception Area at Squires

- ◆ The Fralin Biosafety Level (BSL) Lab is a \$1M renovation project on the third floor of the Fralin Biotechnology Building. This project will create a Biosafety Level 3 Lab (BSL-3) which is a bio-containment laboratory with a BSL-2 prep area. A BSL-3 Lab allows experiments involving the use of infectious Risk Group 3 agents or defective Risk Group 3 viruses in the presence of helper virus. Once completed, the 1,350 SF space will permit research associated with mosquito borne viruses. The space will be designed and certified according to the Center for Disease Control and National Institute of Health guidelines. It will have air locks and special ventilation for compartmental containment. Only certified researchers, who will need to wear containment suits, will have access to the lab. The feasibility study prepared March 2005 by Marsh-Witt Associates, FWA Group and AEI provided Virginia Tech two concept layouts. The construction documents were presented January 2006, and construction commenced February 1, 2006 using Campus Renovations' various term contract labor. Following mechanical systems commissioning and CDD/NIH certification, the anticipated occupancy date is October 2007.