



OUTDOOR FURNITURE GUIDELINES 2024

TABLE OF CONTENTS

01 BLACKSBURG CAMPUS

-----	05
Seating -----	06
Benches -----	07
Tables -----	08
Umbrellas -----	10
Chairs -----	11
Hammocks -----	12
Waste & Recycling -----	13
Trash & Recycling -----	14
Ash Receptacle -----	15
Mobility -----	16
Bike Racks -----	17
Bike Rack Shelters -----	18
Bus Stop Shelters -----	19
Barriers -----	20
Bollards -----	21
Fencing -----	23
Amenities -----	24
BBQ Grills -----	25
Power Pedestals -----	26

TABLE OF CONTENTS

02 SPECIAL USE: DUCK POND

-----	27
Seating -----	28
Benches -----	29
Tables -----	30
Chairs -----	31

03 SPECIAL USE: INFINITE LOOP & CID

-----	32
Seating -----	33
Benches -----	34
Tables -----	36
Umbrellas -----	40
Chairs -----	41
Amenities -----	45
Drinking Fountain -----	46

01
BLACKSBURG
CAMPUS

02
SPECIAL USE:
DUCK POND-

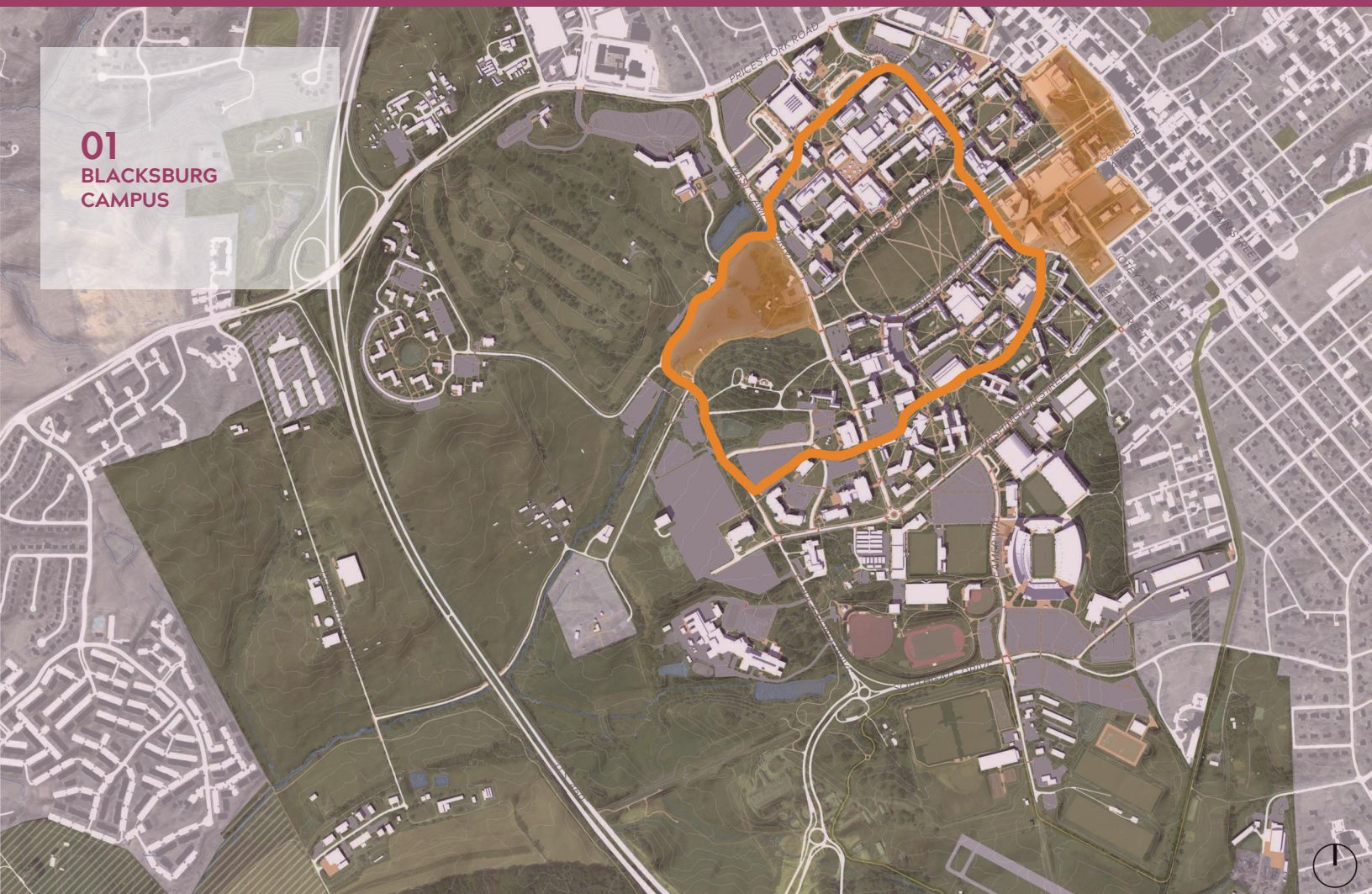
03
SPECIAL USE:
INFINITE LOOP -
& CID-



01

BLACKSBURG CAMPUS

01 BLACKSBURG CAMPUS



01

BLACKSBURG CAMPUS



Image taken by Jay Whitlow, VT Alumni Center

SEATING

BENCHES

Steel Bench



Vendor /Model	Victor Stanley/(RB-28), Renaissance Site Furnishings/(B-1425 “Main Street Bench”) or approved equal.
Color /Finish	Tiger Drylac™ Roman Bronze Matte (039/60060) or approved equal /electrostatically powder-coated.
Dimensions	37” x 73” x 30” (height x length x depth).
Installation	Install on 4’ by 6’ concrete pad; secure to pavement with 3/16” tapcons with stainless washers.
Notes	Backless bench is acceptable with prior approval from University Landscape Architect. For details of products please refer to the “Virginia Tech Design and Construction Standards Detail Library” online.

TABLES

Steel Cafe Table



Vendor /Model	Renaissance Site Furnishings/(T-1600) <i>or approved equal.</i>
Color /Finish	Tiger Drylac™ Roman Bronze Matte (039/60060) <i>or approved equal</i> /electrostatically powder-coated.
Dimensions	30" tall; 42" square or 42" diameter round; 30" square or 30" diameter round.
Installation	Secure to pavement with 1/4" stainless steel wedge anchors.
Notes	Optional umbrella hole. For details of products please refer to the “Virginia Tech Design and Construction Standards Detail Library” online.

TABLES

Standing Bar Table



Vendor /Model	Renaissance Site Furnishings/(T-1701BT) <i>or approved equal.</i>
Color /Finish	Tiger Drylac™ Roman Bronze Matte (039/60060) <i>or approved equal</i> /electrostatically powder-coated.
Dimensions	46" x 60" x 16" (<i>height x length x depth</i>).
Installation	Install powder-coated ½" J bolts in concrete. Washers and nuts for J bolts should be powder-coated to match.
Notes	For details of products please refer to the “Virginia Tech Design and Construction Standards Detail Library” online.

UMBRELLAS

Cafe Table Umbrella



Image taken by Jay Whitlow, VT Alumni Center

Vendor /Model	Galtech (737, LT 7.5 “Market Umbrella”) or approved equal.
Color /Finish	57 Burgundy or approved equal.
Dimensions	96” tall and 7.5’ diameter; provides shade for up to 42” table.
Installation	Secure to table.
Notes	Optional umbrella for cafe table (p. 8). For details of products please refer to the “Virginia Tech Design and Construction Standards Detail Library” online.

CHAIRS

Steel Cafe Chair



Vendor /Model	Renaissance Site Furnishings/(C-1039 “Main Street Chair”) or approved equal.
Color /Finish	Tiger Drylac™ Roman Bronze Matte (039/60060) or approved equal /electrostatically powder-coated
Dimensions	35” x 20” x 21” (height x length x depth).
Installation	Unsecured to pavement; must be placed on hard surface.
Notes	Cuts in steel on the seat should be parallel with the arms of the chair, cuts in steel on the chair back should be vertical. For details of products please refer to the “Virginia Tech Design and Construction Standards Detail Library” online.

HAMMOCKS

Hammock Stands



Image taken from Eno website

Vendor /Model	Eno (SoloPod® Hammock Stand), Eno (ENOpod® Hammock Stand) <i>or approved equal.</i>
Color /Finish	Powder-coated stainless steel, galvanized hardware. Must seek color approval from University Landscape Architect.
Dimensions	1 hammock option is 10'6" x 3'1" x 4'4"; 3-hammock option is 10'2" x 11' x 4'4".
Installation	Unsecured to ground.
Notes	For details of products please refer to the “Virginia Tech Design and Construction Standards Detail Library” online.

01

BLACKSBURG CAMPUS



Image taken by Ben Weidlich, Collegiate Times

WASTE & RECYCLING

TRASH & RECYCLING

Solar Trash & Recycling Compactor



Vendor /Model	Big Belly Smart City Solutions (High Capacity Station - HC5) Smart, solar-powered, compacting model (150 gallon) <i>or approved equal</i> .
Color /Finish	UV stabilized polyester powder-coat finish.
Dimensions	49.8" x 52" x 26.8" (<i>height x length x depth</i>).
Installation	Unsecured to pavement; must be placed on hard surface.
Notes	Optional foot pedestal attachment for sanitary use. For details of products please refer to the "Virginia Tech Design and Construction Standards Detail Library" online.

ASH RECEPTACLE

Ash Receptacle



Vendor /Model	Rubbermaid (Metropolitan Smoker's Station - FGR93400BK) <i>or approved equal.</i>
Color /Finish	Weatherproof Uni-Koat™ powder coating finish <i>or approved equal.</i>
Dimensions	42.8" x 16.0" x 16.0" (<i>height x length x depth</i>).
Installation	Should be bolted into a concrete surface.
Notes	Must be placed at a minimum 25' from any buildings. For details of products please refer to the "Virginia Tech Design and Construction Standards Detail Library" online.

01

BLACKSBURG CAMPUS



MOBILITY

BIKE RACKS

Bike Racks



Vendor /Model	Renaissance Site Furnishings/(BK-2224 “Rails Rack”) or approved equal.
Color /Finish	Tiger Drylac™ Roman Bronze Matte (039/60060) or approved equal /electrostatically powder-coated
Dimensions	(height x length x depth).
Installation	Secure to pavement with 3/8” stainless steel wedge anchors; Slab is 8’ wide x rack length + 30”.
Notes	Specify number of loops (3 to 9). Location and quantity needs additional approval from the Campus Transportation Network Manager. For details of products please refer to the “Virginia Tech Design and Construction Standards Detail Library” online.

BIKE RACK SHELTERS

Bike Rack Shelter



Vendor /Model	Renaissance Site Furnishings/(BKS-1003 Bike Shelter) <i>or approved equal.</i>
Color /Finish	Tiger Drylac™ Roman Bronze Matte (039/60060) <i>or approved equal</i> /electrostatically powder-coated
Dimensions	7'-5" x 19'-11" x 7'-1" (<i>height x length x depth</i>)
Installation	Install on concrete pad; secure 3/8" thick adjustable base to pavement with 3" concrete anchors.
Notes	For details of products please refer to the “Virginia Tech Design and Construction Standards Detail Library” online.

BUS STOP SHELTERS

Bus Stop Shelters



Vendor /Model	Tolar Manufacturing Company, Inc. Model: NIANA-15 (tolarmfg.com/product-categories/niagara-series)
Color /Finish	Tiger Drylac™ Roman Bronze Matte (039/60060) or approved equal /electrostatically powder-coated
Dimensions	8'-4" x 12' x 4' (height x length x depth), or site dependent; coordinate with the Campus Transportation Network Manager.
Installation	Adjustable legs should be secured to pavement with bolts.
Notes	Virginia Tech logo not to be printed on glass. For details of products please refer to the “Virginia Tech Design and Construction Standards Detail Library” online.

01

BLACKSBURG CAMPUS



BARRIERS

BOLLARDS

Removable Bollard



Vendor /Model	MaxiForce (Collapsible Bollards - MCSP-SS2-EZ) with heavy duty aluminum inserts (P-150) <i>or approved equal.</i>
Color /Finish	Tiger Drylac™ Roman Bronze Matte (039/60060) <i>or approved equal</i> /electrostatically powder-coated
Dimensions	32" x 6" x 3" (height x length x depth).
Installation	Embedded in concrete.
Notes	For details of products please refer to the “Virginia Tech Design and Construction Standards Detail Library” online.

BOLLARDS

Fixed Bollard



Vendor /Model	MaxiForce (Fixed Standard Bollard - MFSB-SS2-N) <i>or approved equal.</i>
Color /Finish	Tiger Drylac™ Roman Bronze Matte (039/60060) <i>or approved equal</i> /electrostatically powder-coated
Dimensions	32" x 6" x 3" (height x length x depth).
Installation	Install 8" x 8" base plate to concrete with anchor bolts.
Notes	This fixed bollard option is required if being placed over a steam tunnel. May be filled with concrete for extra reinforcement. For details of products please refer to the “Virginia Tech Design and Construction Standards Detail Library” online.

FENCING

Post and Chain



Vendor /Model	R&R Ironworks (Post and Chain) <i>or approved equal.</i>
Color /Finish	Tiger Drylac™ Roman Bronze Matte (039/60060) <i>or approved equal</i> /electrostatically powder-coated.
Dimensions	33" x 2" x 4" (height x length x depth).
Installation	to be spaced on center 9' apart.
Notes	For details of products please refer to the “Virginia Tech Design and Construction Standards Detail Library” online.

01

BLACKSBURG CAMPUS



AMENITIES

BBQ GRILLS

BBQ Grills



Vendor /Model	Pilot Rock (Covered Park Grill - EC-40/S B2) or approved equal.
Color /Finish	Black or approved equal.
Dimensions	19.5" x 41.5" x 16.5" (height x length x depth).
Installation	Grill is supported by a 3.5" O.D., 40" long, steel pipe for permanent installation in concrete footing.
Notes	Grill with side utility shelf; optional warming basket. For details of products please refer to the “Virginia Tech Design and Construction Standards Detail Library” online.

POWER PEDESTALS

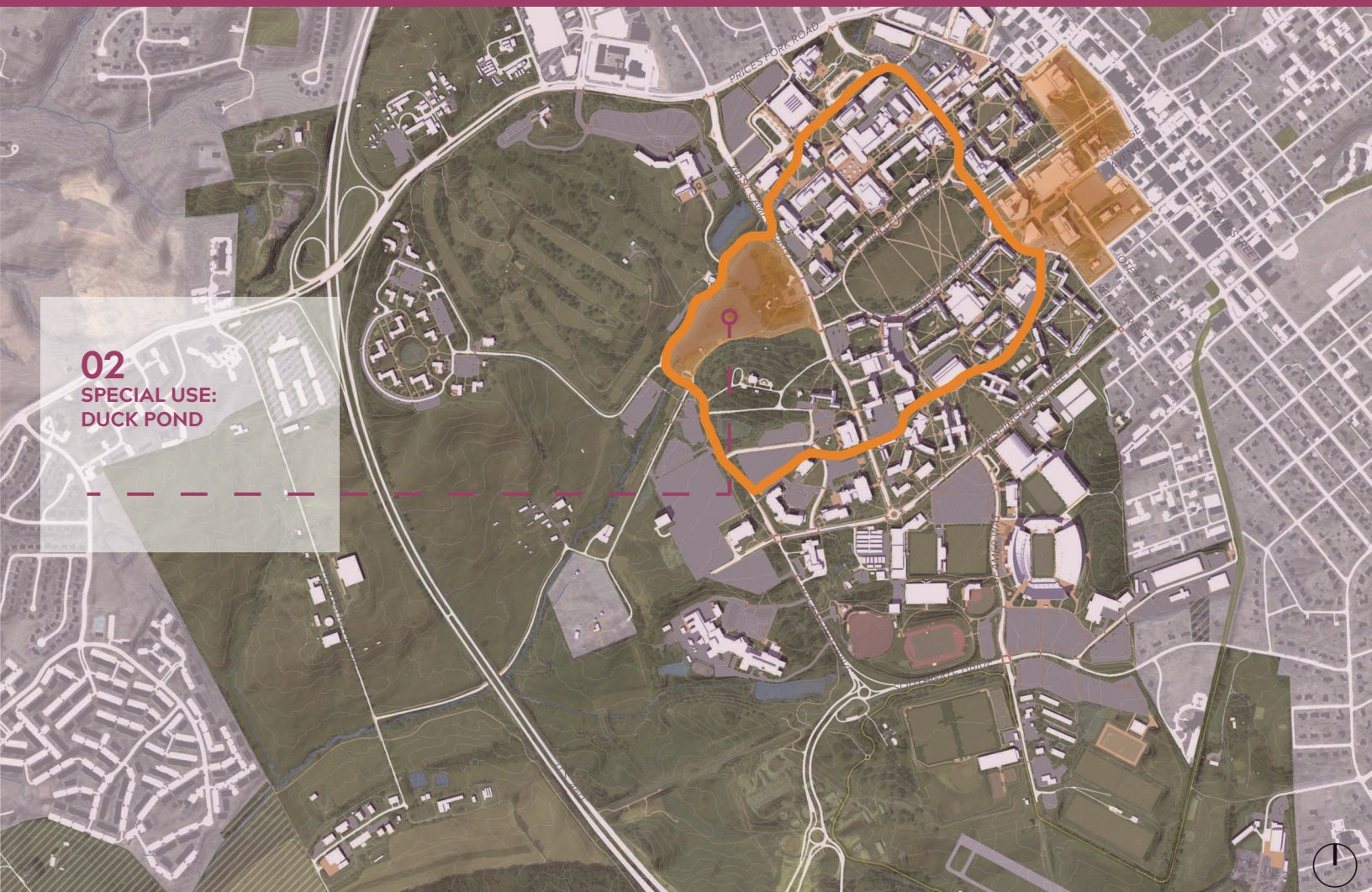
Power Pedestals



Vendor /Model	Legrand (Power Pedestal) <i>or approved equal.</i>
Color /Finish	Color should match to Hokie Light
Dimensions	34" x 8" x 6" (<i>height x length x depth</i>).
Installation	Secure to concrete with bolts; see product installation details.
Notes	Plugins mixed and matches as needed per location (GFCI, USB, 2-3-4-gang). For details of products please refer to the “Virginia Tech Design and Construction Standards Detail Library” online.

02

SPECIAL USE: DUCK POND



02

SPECIAL USE: DUCK POND



Image taken by Peter Means, 2013

SEATING

BENCHES

Teak Wood Bench



Vendor /Model	Country Casual Teak (Windermere Wood Bench #4502) or approved equal.
Color /Finish	No finish.
Dimensions	35" x 72" x 20" (height x length x depth).
Installation	Attach to solid surface such as concrete pad, wood deck, or other approved surface.
Notes	For details of products please refer to the "Virginia Tech Design and Construction Standards Detail Library" online.

TABLES

Wood Picnic Table Set



Vendor /Model	Country Casual Teak (Chelmsford Round Teak Picnic Set #4883) <i>or approved equal.</i>
Color /Finish	No finish.
Dimensions	Table is 29.5" tall, 59" diameter; benches are 16" x 82" x 31"
Installation	Attach to solid surface such as concrete pad, wood deck, or other approved surface with anchoring hardware.
Notes	For details of products please refer to the "Virginia Tech Design and Construction Standards Detail Library" online.

CHAIRS

Wood Adirondack Chair



Image taken from Country Casual Teak website

Vendor /Model	Country Casual Teak (Campus Teak Adirondack Chair #7275) or approved equal.
Color /Finish	No finish.
Dimensions	39" x 31" x 36" (height x length x depth).
Installation	Unsecured to ground.
Notes	For details of products please refer to the "Virginia Tech Design and Construction Standards Detail Library" online.

03

SPECIAL USE: INFINITE LOOP & CID



03
SPECIAL USE:
INFINITE LOOP
& CID

03

SPECIAL USE: INFINITE LOOP & CID



Image taken from Surface 678 website

SEATING

BENCHES

Contemporary Wood & Metal Bench



Image taken from Landscape Forms website

Vendor /Model	Landscape Forms (Generation 50 Bench) or approved equal.
Color /Finish	Metal: Dusk or approved equal, powder-coat finish. Wood: thermally modified ash with no finish.
Dimensions	33" x 72" x 26" (height x length x depth).
Installation	Secure to concrete using tapcons.
Notes	Traditional angle end arms and backed. For details of products please refer to the "Virginia Tech Design and Construction Standards Detail Library" online.

BENCHES

Wood Parallel Bench



Vendor /Model	Landscape Forms (Parallel 42 Bench) <i>or approved equal.</i>
Color /Finish	Metal: Cranberry , <i>or approved equal</i> , powder-coat finish. Wood: domestically sourced, thermally modified ash, no finish.
Dimensions	18" x 77" x 18" (<i>height x length x depth</i>).
Installation	Unsecured to pavement; must be placed on hard surface.
Notes	For details of products please refer to the “Virginia Tech Design and Construction Standards Detail Library” online.

TABLES

Plaza Table (option A)



Image taken from Landscape Forms website

Vendor /Model	Landscape Forms (Parc Centre Table) or <i>approved equal</i> .
Color /Finish	Mercury or <i>approved equal</i> , powder-coat finish.
Dimensions	height; 24" round or 30" round.
Installation	Surface mount to concrete pad.
Notes	For details of products please refer to the "Virginia Tech Design and Construction Standards Detail Library" online.

TABLES

Plaza Table (option B)



Vendor /Model	Grand Rapids Chair Co (Bowen Outdoor Pedestal Table) <i>or approved equal.</i>
Color /Finish	Base is Graphite <i>or approved equal</i> , powder-coat finish; top is Coastal Grey <i>or approved equal.</i>
Dimensions	30" x 24" x 24" (height x length x depth). 30" x 30" x 29" (height x length x depth).
Installation	Unsecured to pavement; must be placed on hard surface.
Notes	For details of products please refer to the "Virginia Tech Design and Construction Standards Detail Library" online.

TABLES

Plaza Coffee Table



Image taken from Loll Designs website

Vendor /Model	Loll Designs (Lollygagger Cocktail Table Round) <i>or approved equal.</i>
Color /Finish	Charcoal grey <i>or approved equal</i> , powder-coat finish.
Dimensions	12.75" x 30" x 30" (<i>height x length x depth</i>).
Installation	Unsecured to pavement; must be placed on hard surface.
Notes	For details of products please refer to the “Virginia Tech Design and Construction Standards Detail Library” online.

TABLES

Bar Height Table Set



Vendor /Model	Landscape Forms (Harvest Table and Bench) <i>or approved equal.</i>
Color /Finish	Sunset Orange <i>or approved equal.</i>
Dimensions	Benches are 29" x 45.5" x 21" (<i>height x length x depth</i>). Table is 40" x 94.75" x 36.75" (<i>height x length x depth</i>).
Installation	Unsecured to pavement; must be placed on hard surface.
Notes	Standing height. For details of products please refer to the “Virginia Tech Design and Construction Standards Detail Library” online.

UMBRELLA

Plaza Table Umbrellas



Image taken from Landscape Forms website

Vendor /Model	Landscape Forms (Stretch Umbrella) <i>or approved equal.</i>
Color /Finish	Mercury <i>or approved equal</i> , powder-coat finish.
Dimensions	92.25" x 78" x 78" (<i>height x length x depth</i>).
Installation	Secure to table.
Notes	Optional umbrella to pair with the Landscape Forms Parc Centre Table (p. 36). For details of products please refer to the “Virginia Tech Design and Construction Standards Detail Library” online.

CHAIRS

Plaza Chair (option A)



Vendor /Model	Landscape Forms (Chipman Chair) <i>or approved equal.</i>
Color /Finish	Cranberry <i>or approved equal</i> , powder-coat finish.
Dimensions	33" x 20" x 22" (<i>height x length x depth</i>).
Installation	Unsecured to pavement; must be placed on hard surface.
Notes	For details of products please refer to the “Virginia Tech Design and Construction Standards Detail Library” online.

CHAIRS

Plaza Chair (option B)



Vendor /Model	Landscape Forms (Parc Centre Chair) <i>or approved equal.</i>
Color /Finish	Mercury <i>or approved equal</i> , powder-coat finish. Cranberry <i>or approved equal</i> , powder-coat finish.
Dimensions	33" x 21" x 22" (<i>height x length x depth</i>).
Installation	Unsecured to pavement; must be placed on hard surface.
Notes	For details of products please refer to the “Virginia Tech Design and Construction Standards Detail Library” online.

CHAIRS

Plaza Chair (option C)



Image taken from Landscape Forms website

Vendor /Model	Landscape Forms (21 Chair) or approved equal.
Color /Finish	Mercury or approved equal, powder-coat finish. Cranberry or approved equal, powder-coat finish.
Dimensions	32.75" x 28" x 25.5" (height x length x depth).
Installation	Unsecured to pavement; must be placed on hard surface.
Notes	For details of products please refer to the "Virginia Tech Design and Construction Standards Detail Library" online.

CHAIRS

Adirondack Chair



Vendor /Model	Landscape Forms (Americana Lounge Chair) <i>or approved equal.</i>
Color /Finish	Sunset Orange <i>or approved equal.</i>
Dimensions	39.25" x 33.5" x 37.5" (<i>height x length x depth</i>).
Installation	Unsecured to pavement; must be placed on hard surface.
Notes	For details of products please refer to the “Virginia Tech Design and Construction Standards Detail Library” online.

03

SPECIAL USE: INFINITE LOOP & CID



Image taken by Sarah Myers for Virginia Tech

AMENITIES

DRINKING FOUNTAINS

Outdoor Drinking Fountain and Bottle Filler



Image taken by Murdock Hydration website

Vendor /Model	Murdock Hydration (Bi-Level Drinking Fountains with Bottle Filler on Arm - GYV34) <i>or approved equal.</i>
Color /Finish	All stainless steel <i>or approved equal.</i>
Dimensions	50" x 48" x 24" (<i>height x length x depth</i>).
Installation	Install on concrete pad with 1/2" NPTM supply inlet flexible connection and supplied anchors.
Notes	ADA compliant, pet fountain included. For details of products please refer to the "Virginia Tech Design and Construction Standards Detail Library" online.