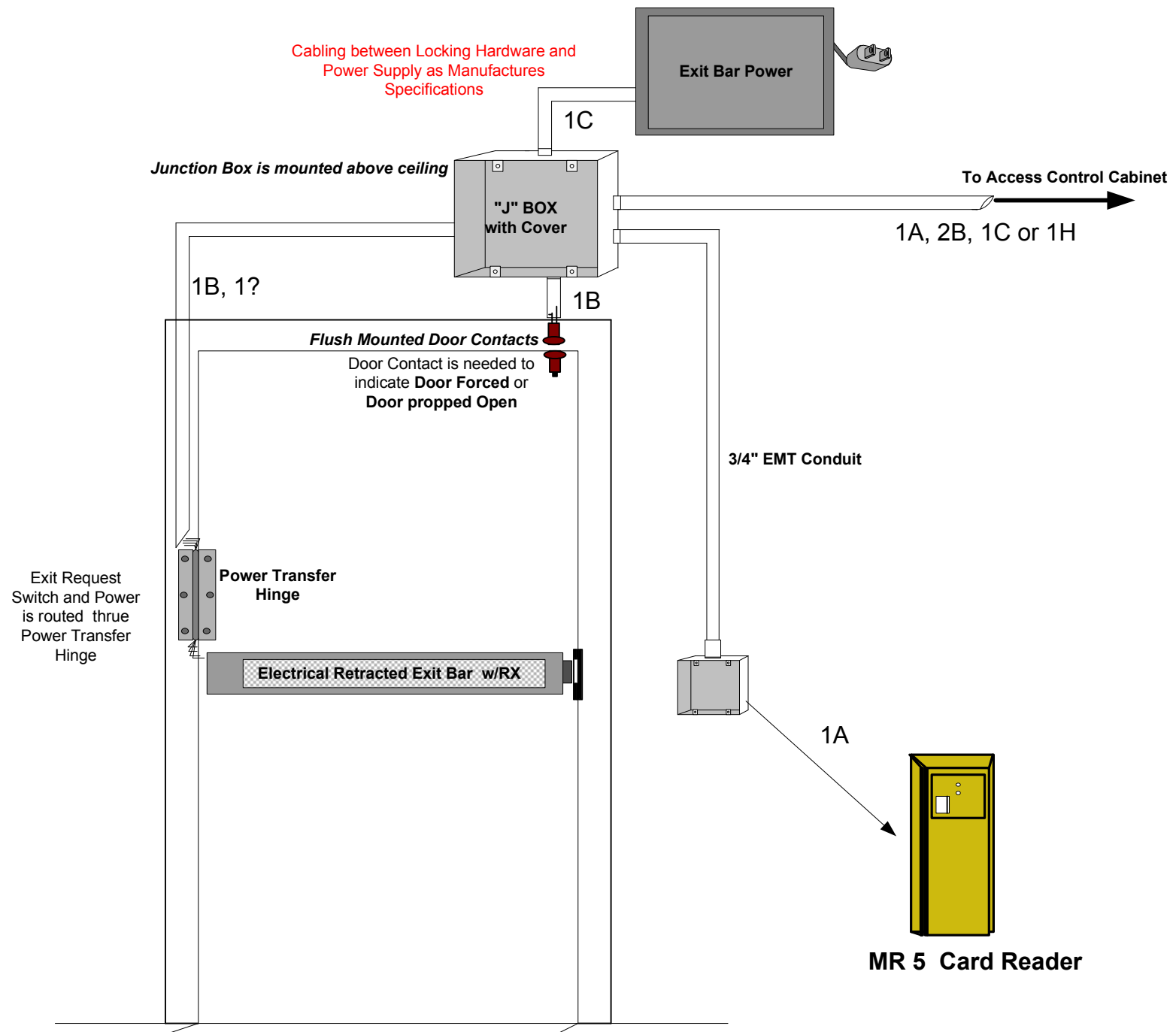
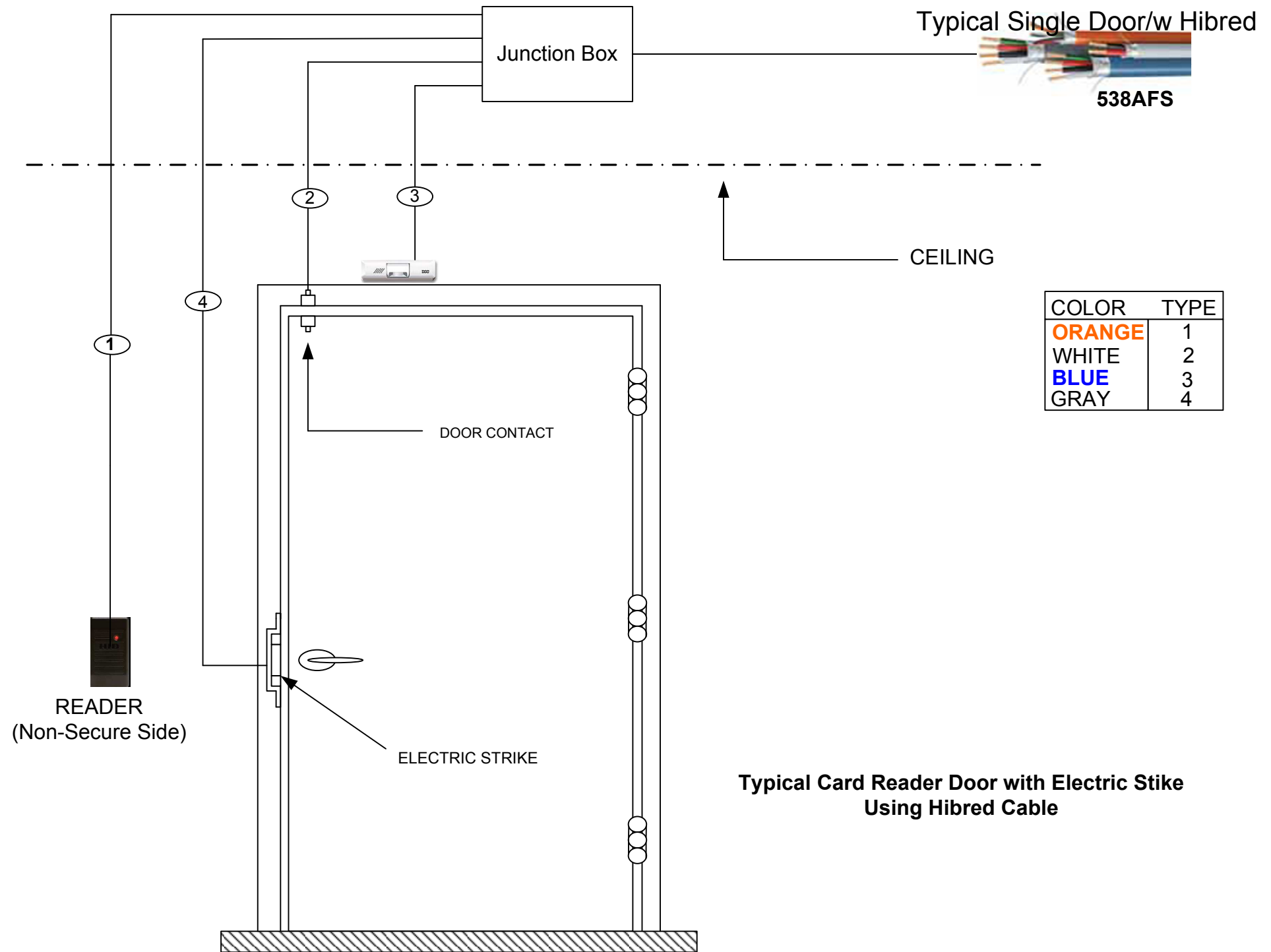
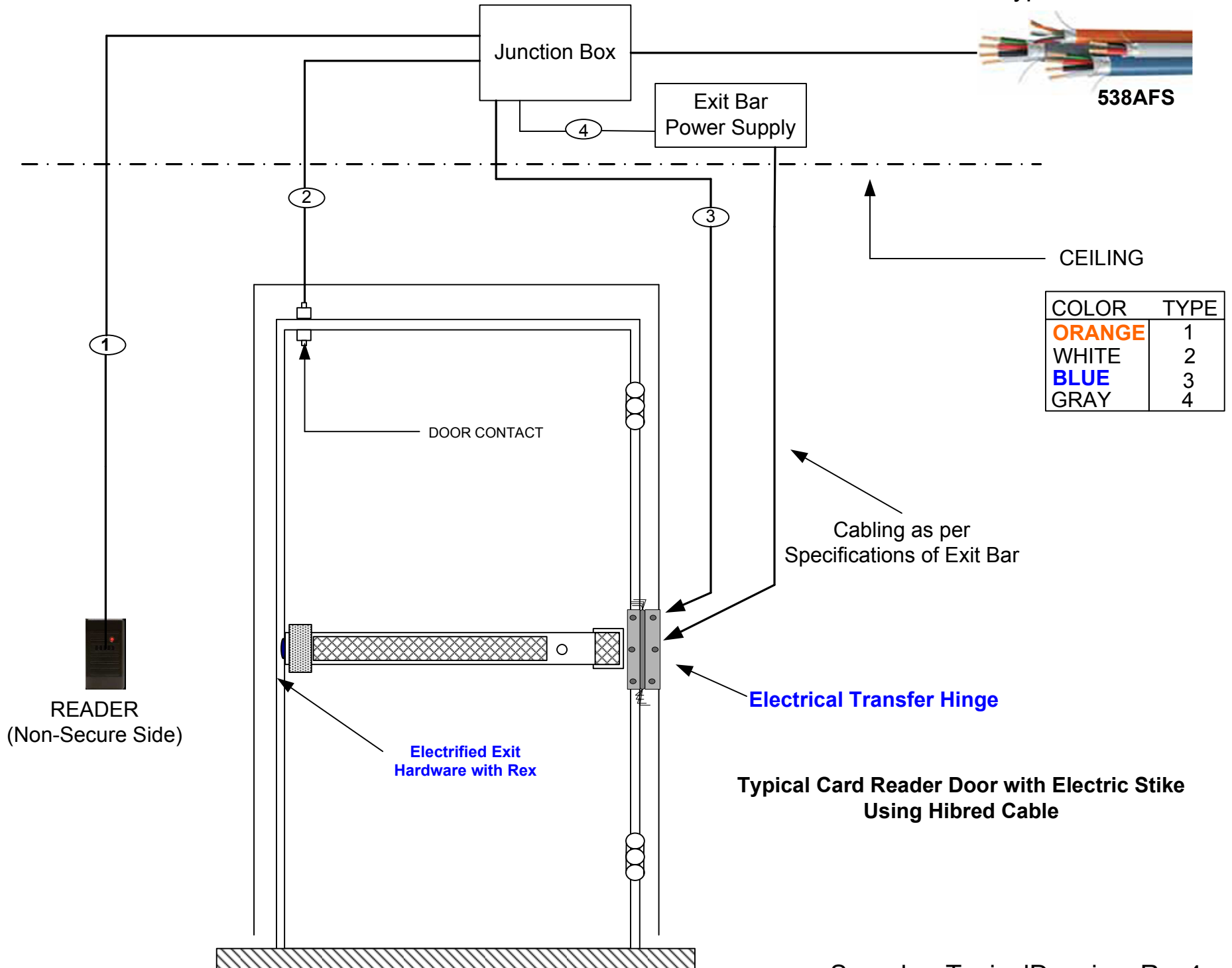


Placement for Exit Device Power Supply
mounted above ceiling or as per Manufactures
Specifications





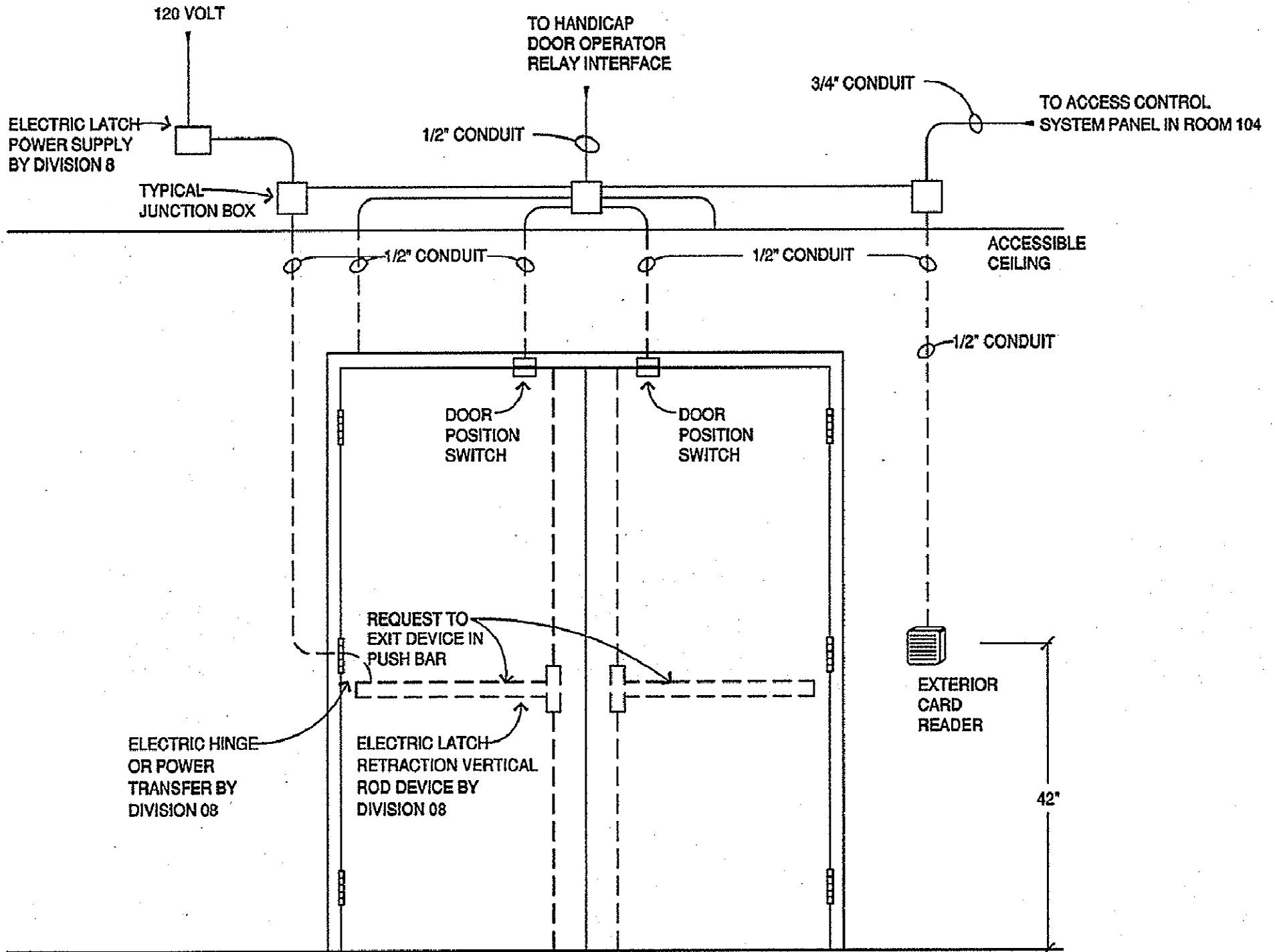
Typical Door W/Exit Bar



COLOR	TYPE
ORANGE	1
WHITE	2
BLUE	3
GRAY	4

Typical Card Reader Door with Electric Stike Using Hibred Cable

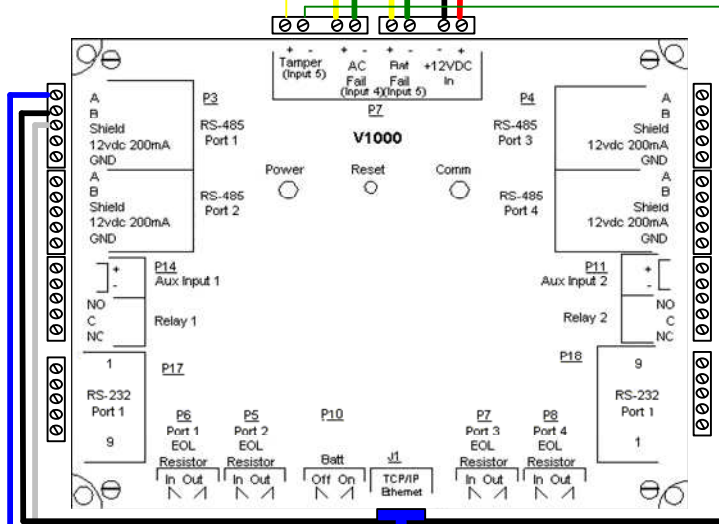
Double Doors



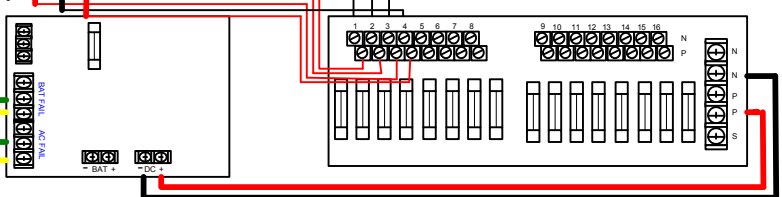
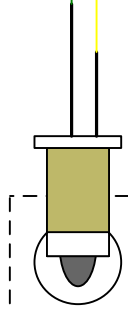
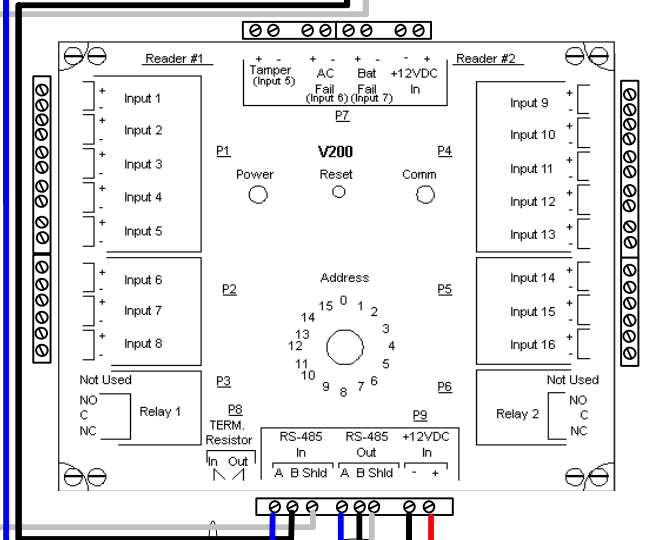
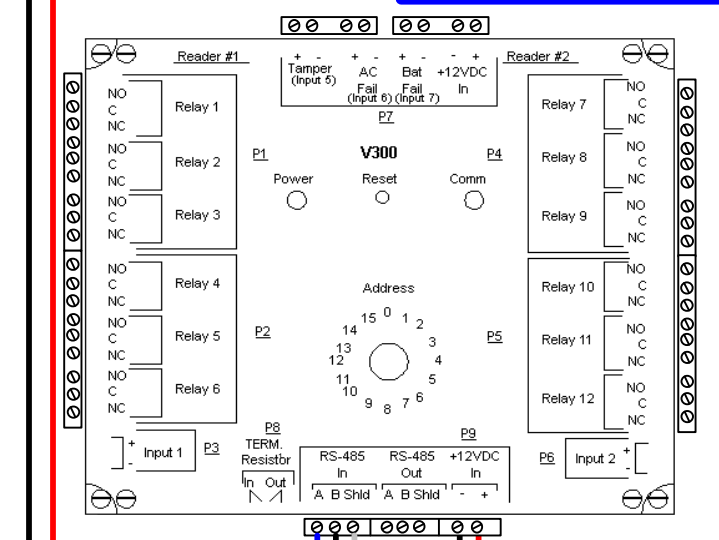
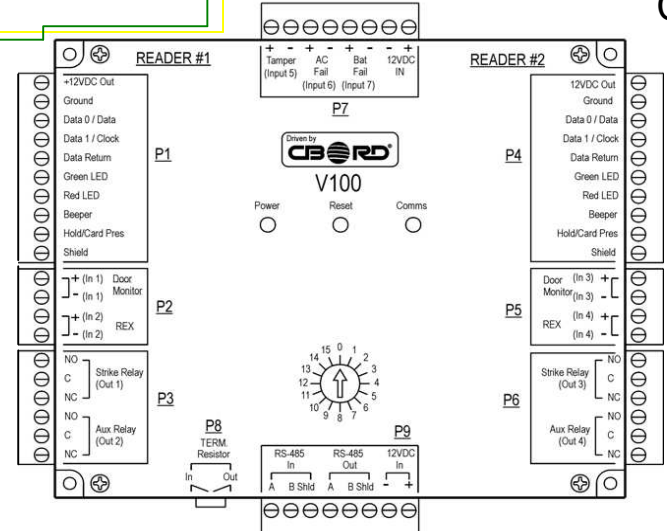


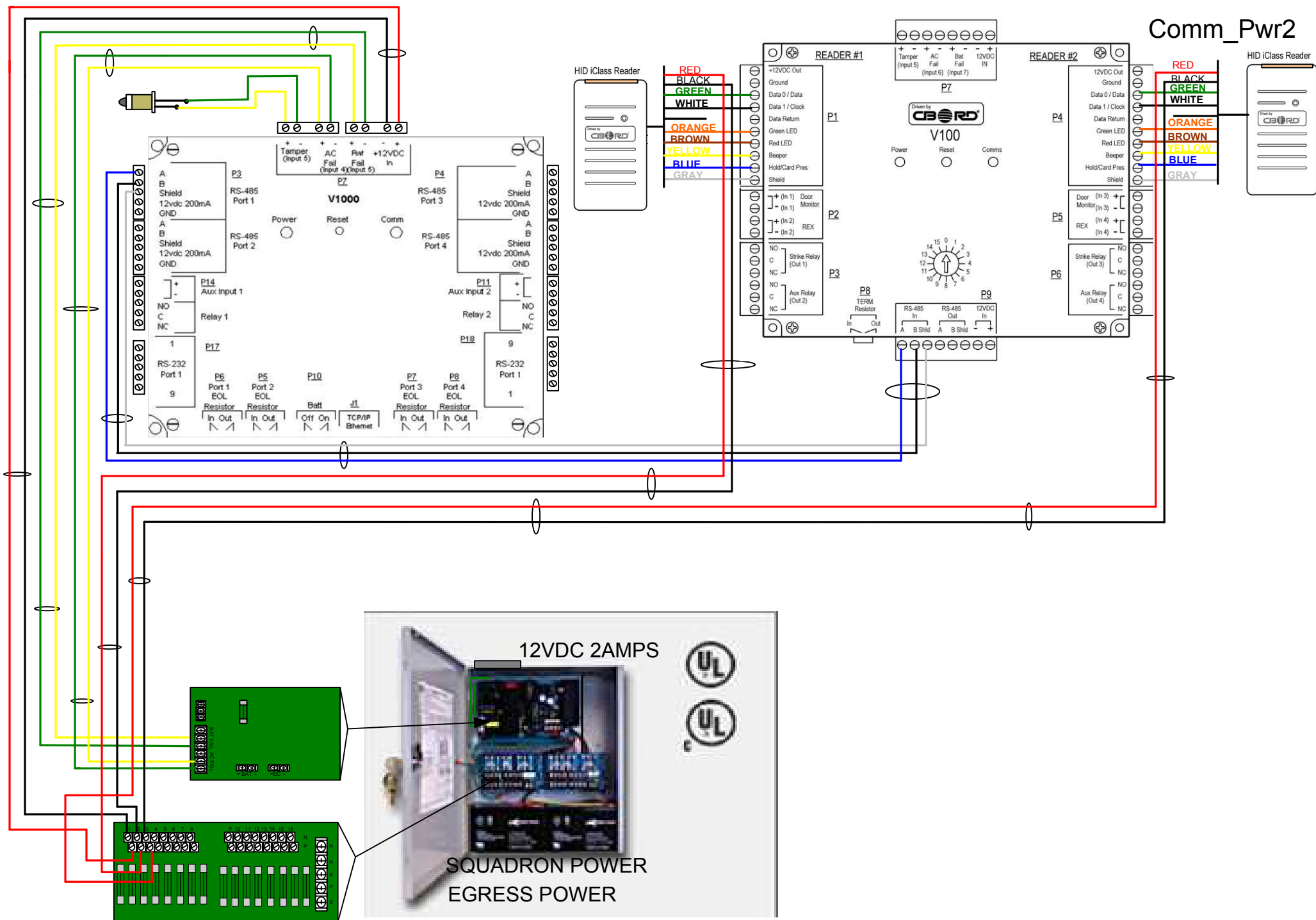


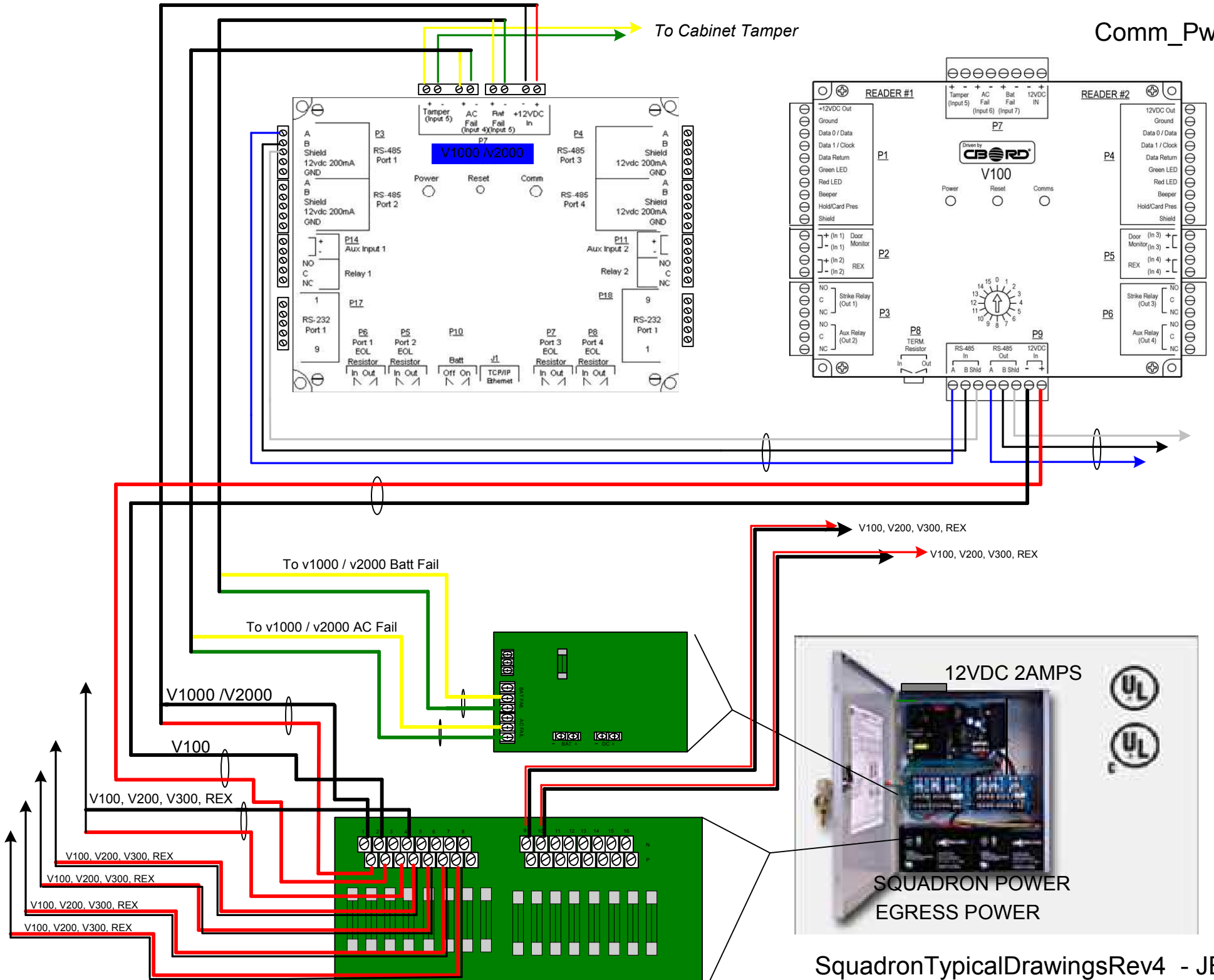
Comm_Pwr



Network Cable







TYPE	PART NUMBER	DESCRIPTION	Cabling
A	5388C BELDEN 5306FE CAROL E2038S Or equivalent	8 Conductor #18awg, Stranded, Shielded w/ drain, Color Coded	
B	YR15950	4 Conductor #22awg, Stranded, Shielded w/ drain, Color Coded	
C	82760	2 Conductor #18awg, Stranded, No Shielded	
D		CAT 5/6E – 8 Conductor Twisted Paired, 568B Network Cable	
H	538AFS	1 - 6 Conductor #18awg, Stranded, Shielded w/Drain (White,Green,Orange,Brown,Red,Black) 1 - 4 Conductor #16awg, Stranded, Shielded w/Drain (White,Black,Red,Green) 1 - 4 Conductor #18awg, Stranded, Shielded w/Drain (White,Black,Red,Green) 1 - 2 Conductor #18awg, Stranded, Shielded w/Drain (Red,Black)	

DEVICE	PART NUMBER	DESCRIPTION
Hid Prox Combo Prox / Magnetic Stripe Dorado A1005WR A2005 Biometric	5388C BELDEN 5306FE CAROL E2038S 538AFS	8 Conductor #18awg, Stranded, Shielded w/ drain, Color Coded Hibred 1 - 6 Conductor #18awg, Stranded, Shielded w/Drain 1 - 4 Conductor #16awg, Stranded, Shielded w/Drain 1 - 4 Conductor #18awg, Stranded, Shielded w/Drain 1 - 2 Conductor #18awg, Stranded, Shielded w/Drain
Exit Request <small>Rex as Part of Locking Device (Exit Bar or Lever)</small> Door Strike Exit Request PIR Door Contact	YR15950 82760 YR15950 / 82760 YR15950	4 Conductor #22awg, Stranded, Shielded w/ drain, Color Coded 2 Conductor #18awg, Stranded, No Shielded 4 Conductor #22awg, Stranded, Shielded w/ drain, Color Coded 2 Conductor #18awg, Stranded, No Shielded 4 Conductor #22awg, Stranded, Shielded w/ drain, Color Coded



NEC Article 800 **538AFS**

(1) 4-Cond. Beldfoil
16 AWG
White, Black
Red, Green,
Stranded
Shielded

Gray

**LOCKING HARDWARE
Spare**

(1) 4-Cond. Beldfoil
18 AWG
White, Black
Red, Green
Stranded
Shielded

Blue

**REX
Spare**

(1) 3-Pair Beldfoil
18 AWG
White & Green,
Orange & Brown,
Red & Black
Stranded
Shielded

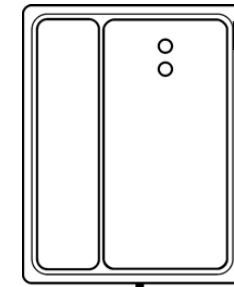
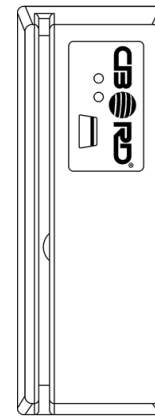
Orange

CARD READER

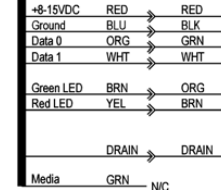
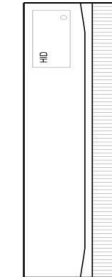
(1) 2-Cond. Beldfoil
18 AWG
Red,
Black
Bare Copper
Stranded
Shielded

White

DOOR CONTACT



Hybrid Cabling



NEC Article 800 **538AFS**

(1) 4-Cond. Beldfoil
16 AWG
White, Black
Red, Green,
Stranded
Shielded

Gray

**LOCKING HARDWARE
REX POWER**

(1) 4-Cond. Beldfoil
18 AWG
White, Black
Red, Green
Stranded
Shielded

Blue

**REX
DOOR CONTACT**

(1) 3-Pair Beldfoil
18 AWG
White & Green,
Orange & Brown,
Red & Black
Stranded
Shielded

Orange

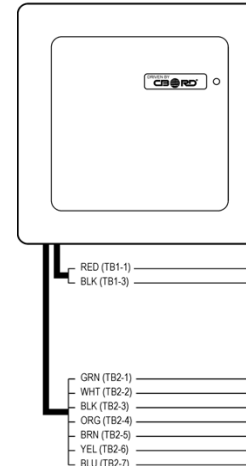
CARD READER

(1) 2-Cond. Beldfoil
18 AWG
Red,
Black
Bare Copper
Stranded
Shielded

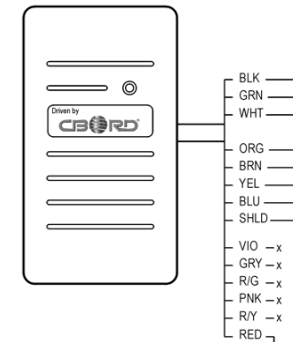
White

Card Reader Power

HID Maxi Prox Reader



HID iClass Reader



538AFS



Typical Hibred Layout

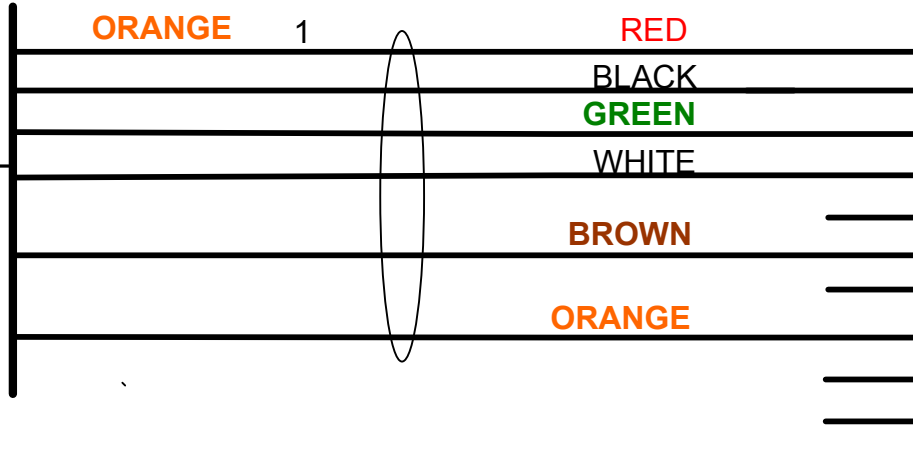
DEVICES

HIBRED CABLE / BANANA PEEL

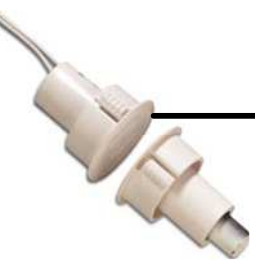
SQUADRON PANEL



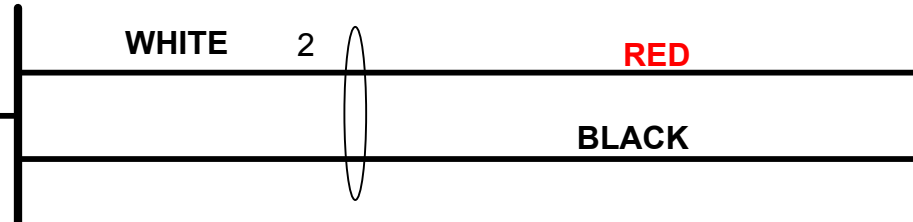
MR5



- + 12VDC
- GROUND
- DATA 0 / DATA
- DATA 1 / CLOCK
- DATA RETURN
- GREEN LED
- RED LED
- BEEPER
- HOLD / CARD PRES
- SHIELD



DOOR CONTACT



- + In 1 DOOR
- In 1 MONITOR

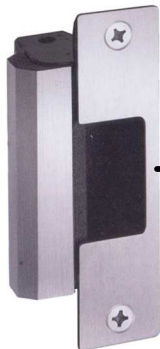


REQUEST TO EXIT PIR

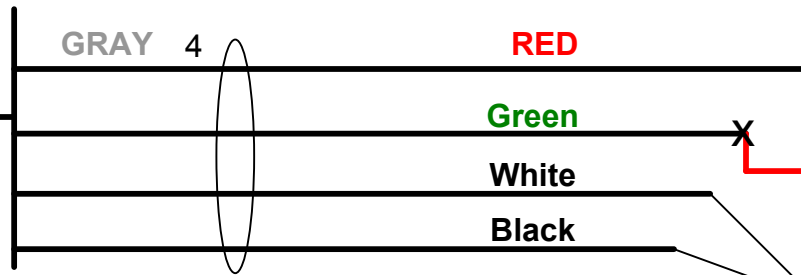


- + In 2
 - In 2
- Rex**

To Squadron Power Supply



ELECTRIC STRIKE



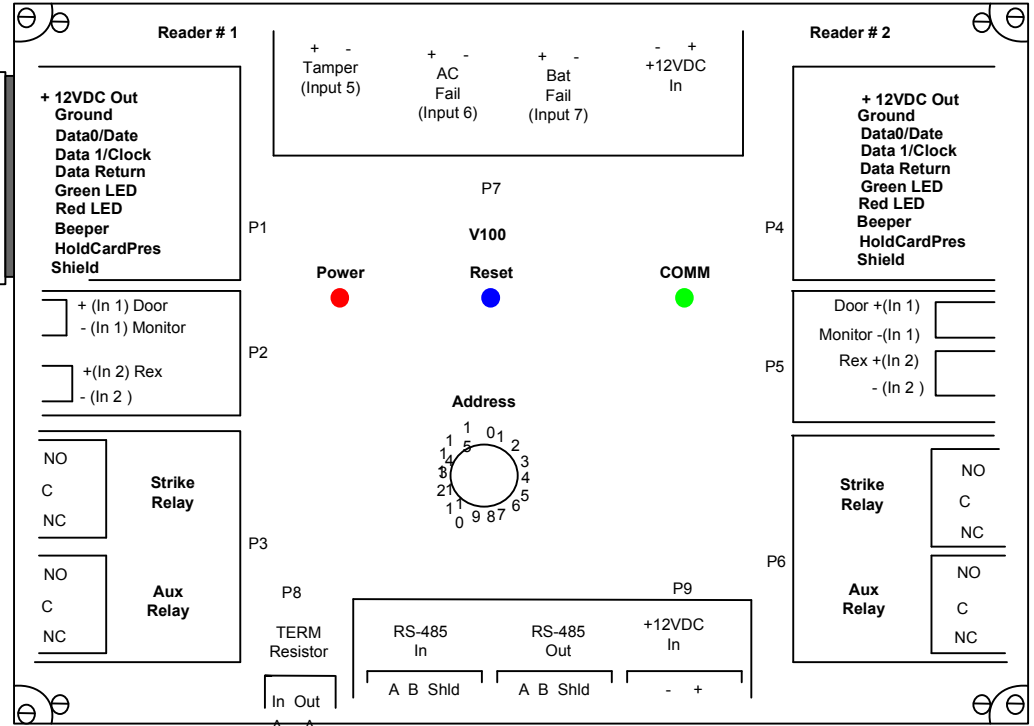
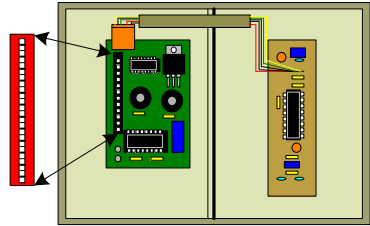
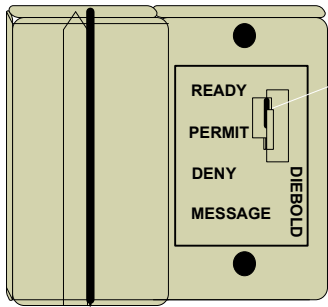
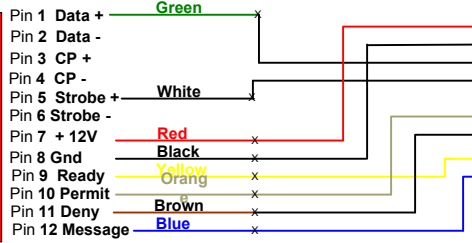
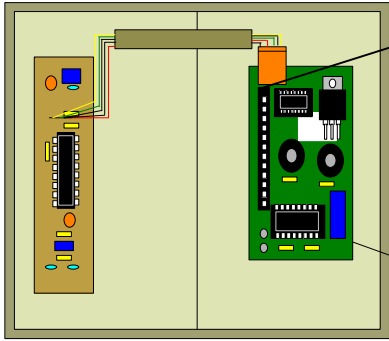
- NO
- C OUT 1
- NC

Spare

STRIKE POWER
SUPPLIED BY
PROVIDER OF
STRIKE

A1000AR

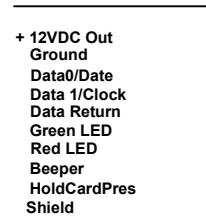
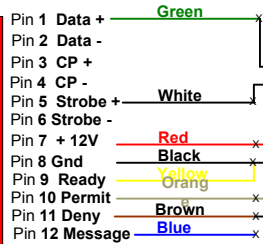
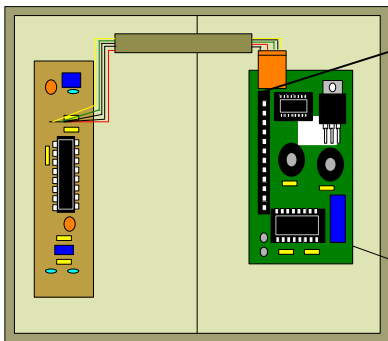
Using eight (8) Wires

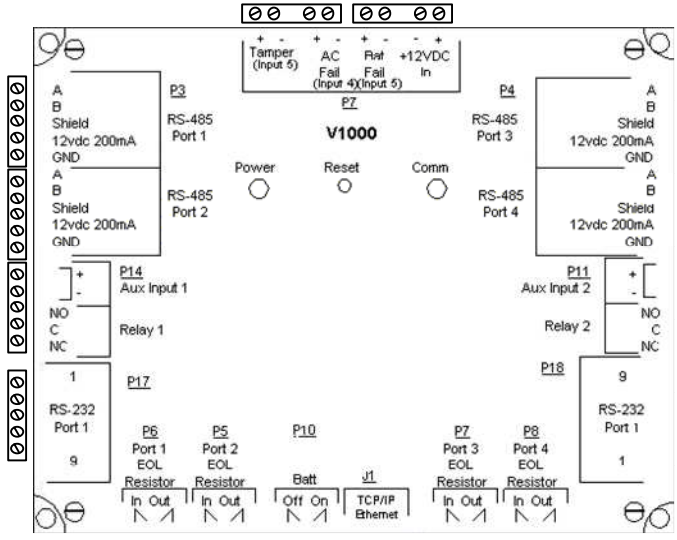


A1000WR

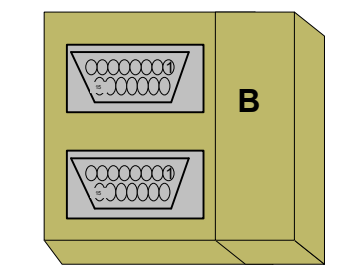
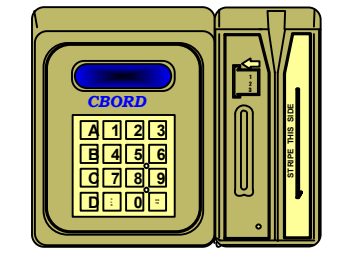
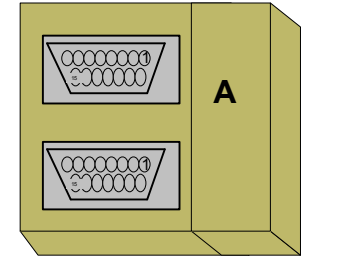
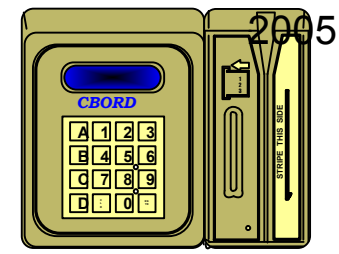
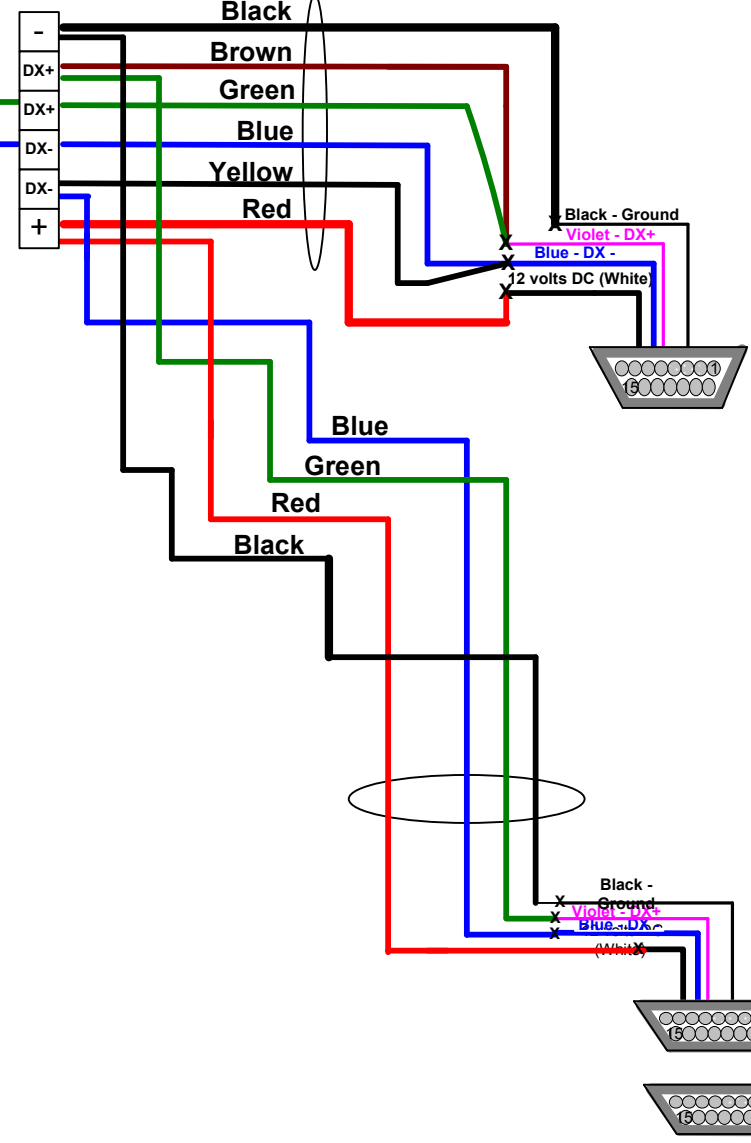
Using Six (6) Wires

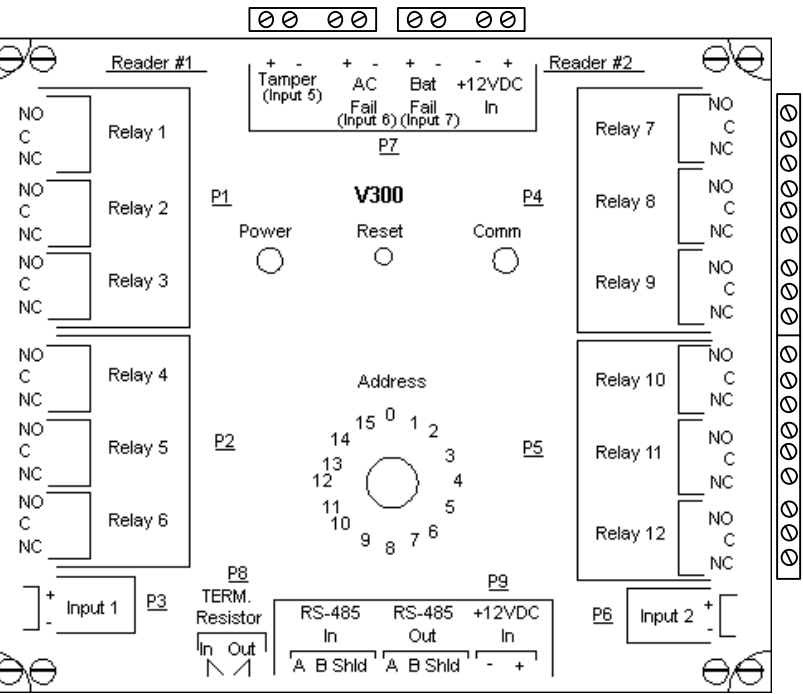
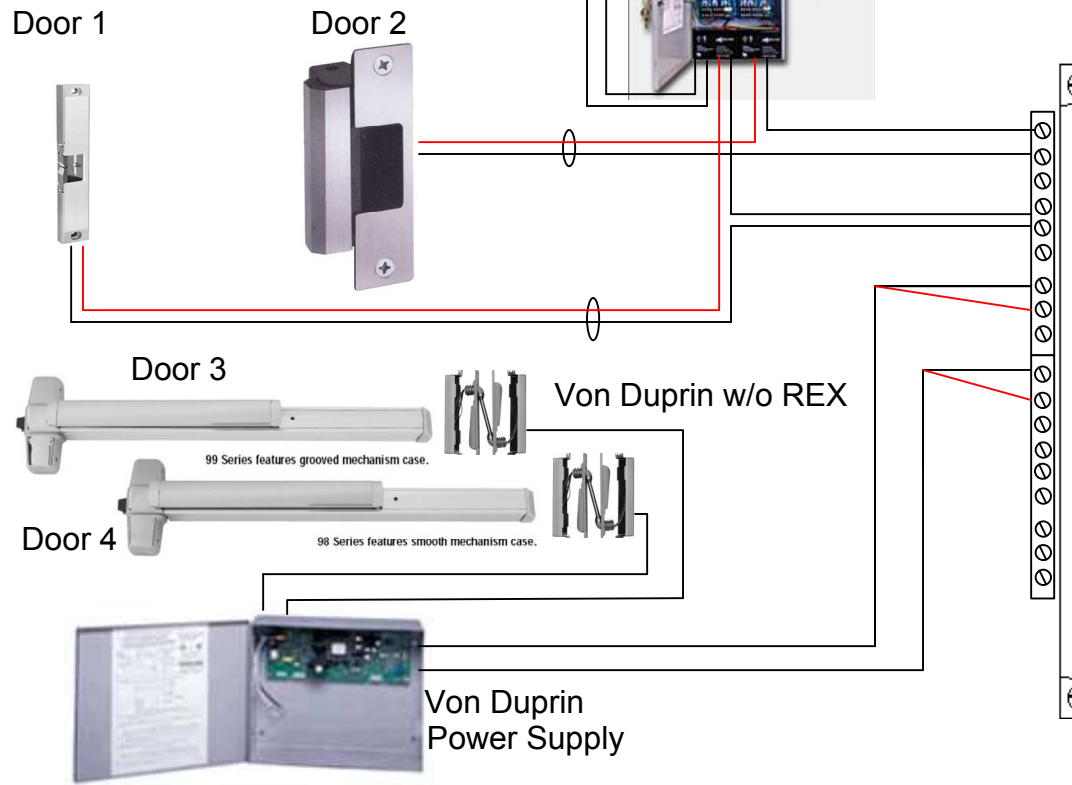
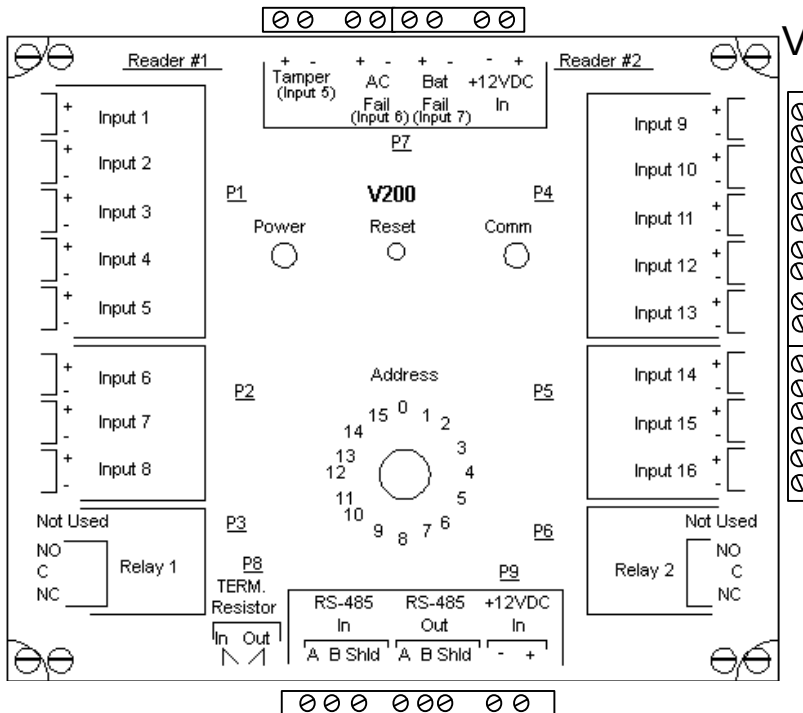
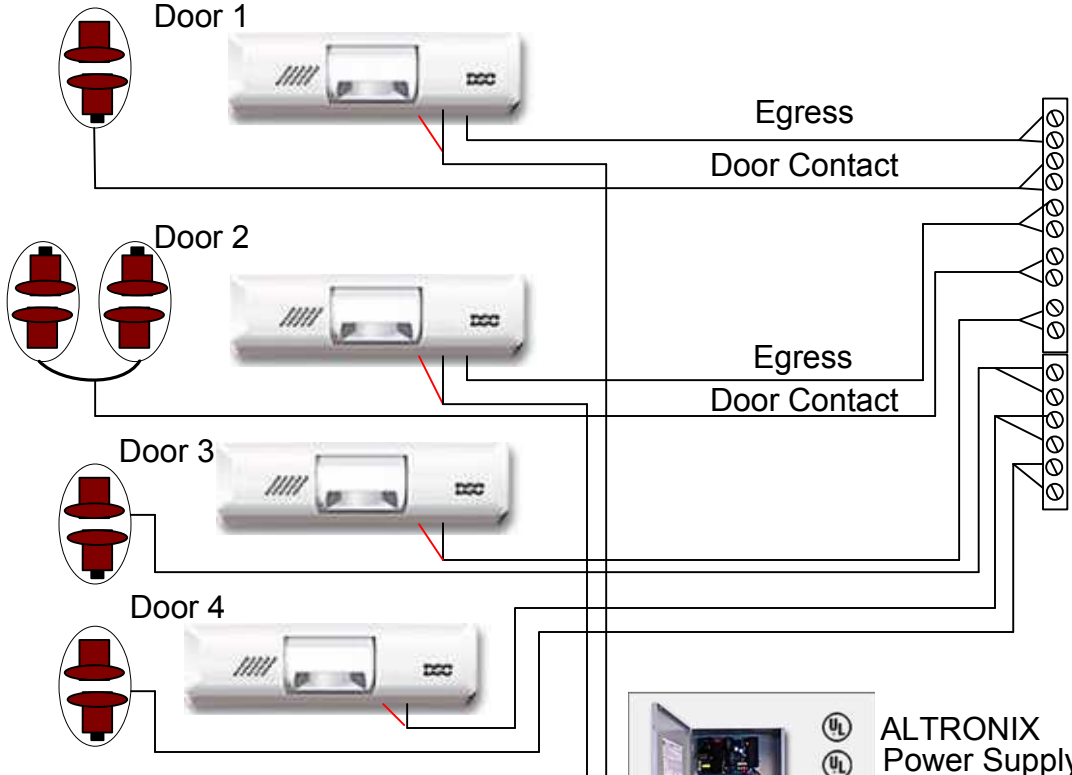
Squadron Panel



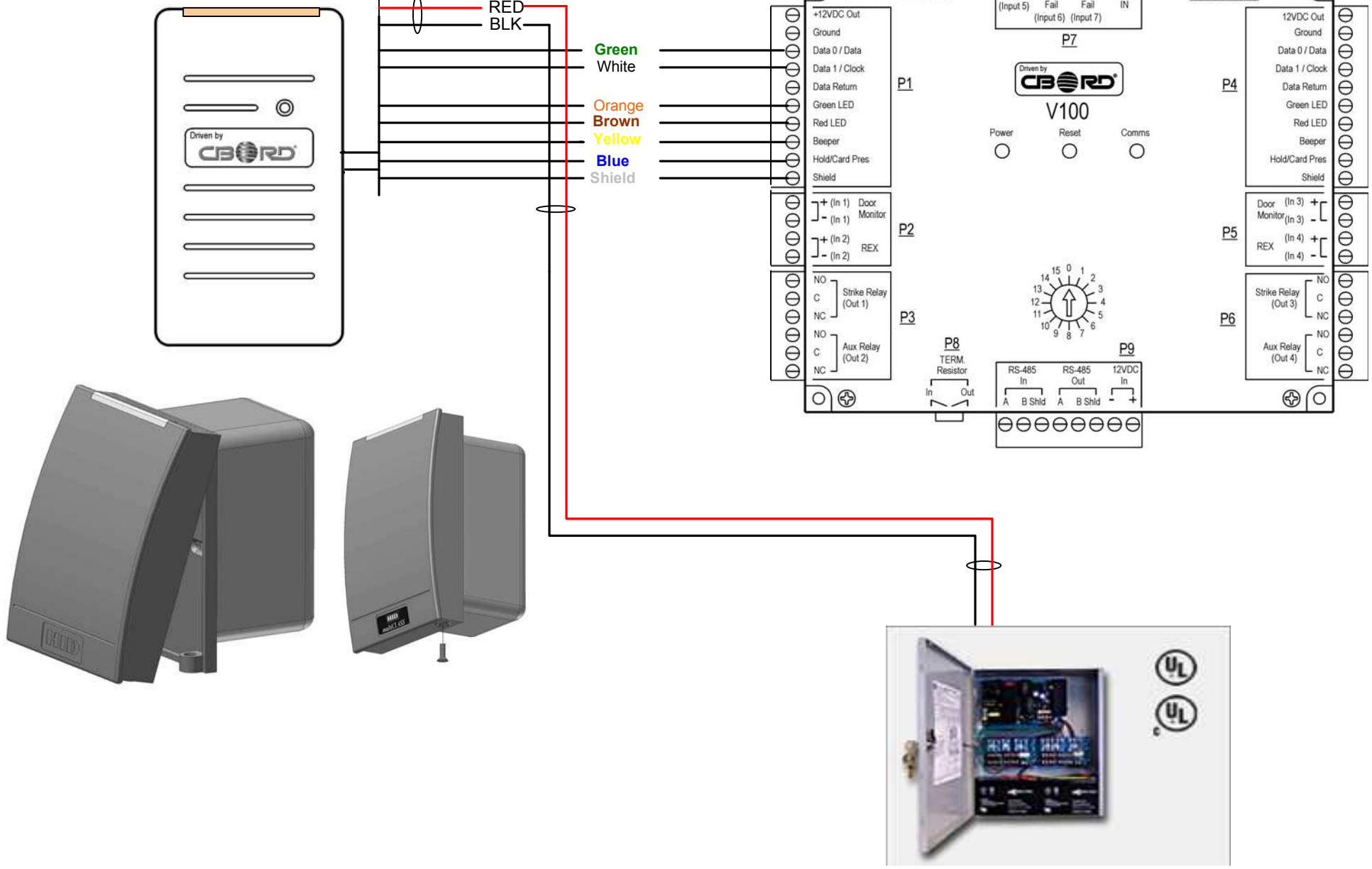


TERMINAL STRIP

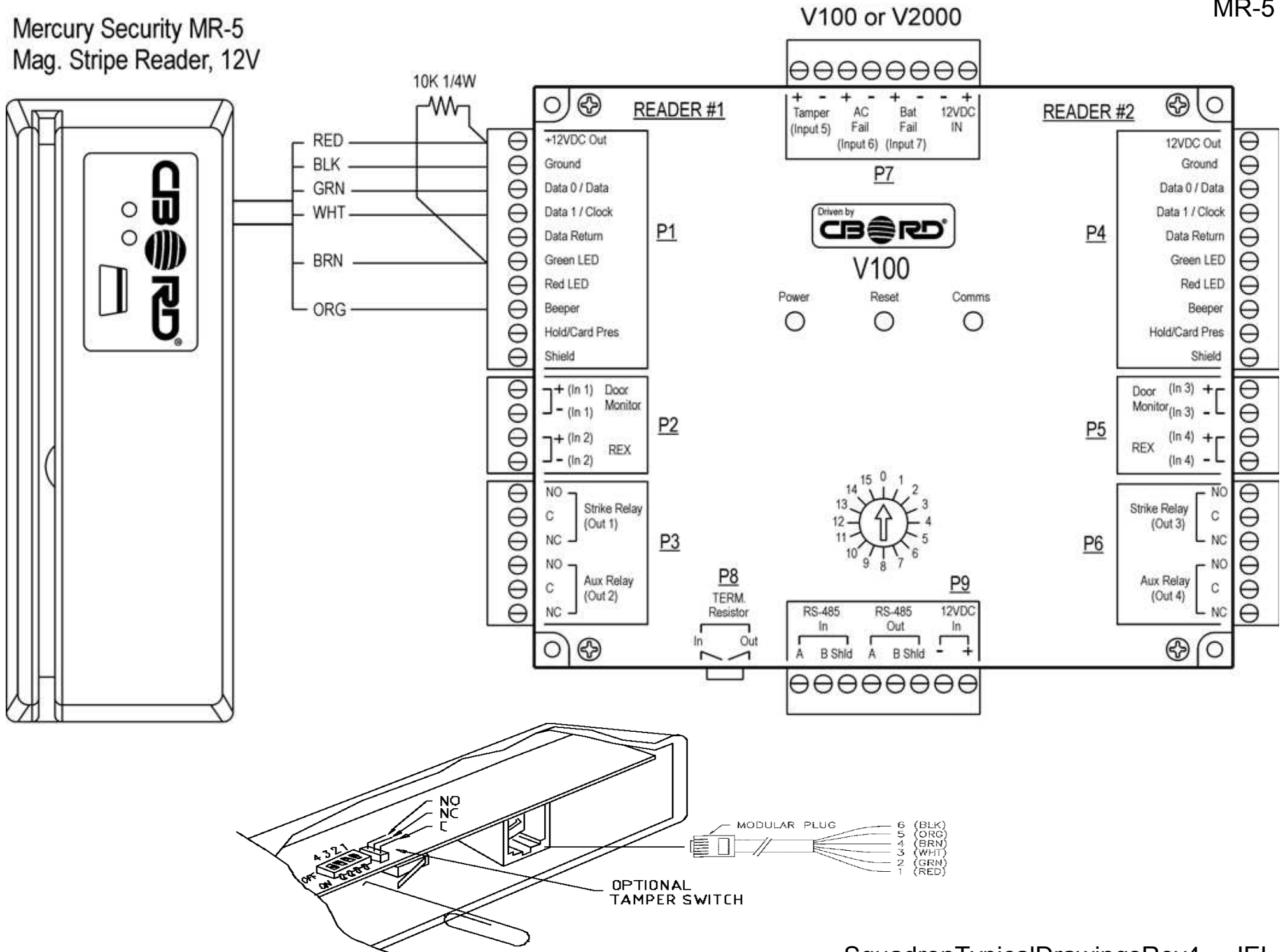




HID iClass Reader

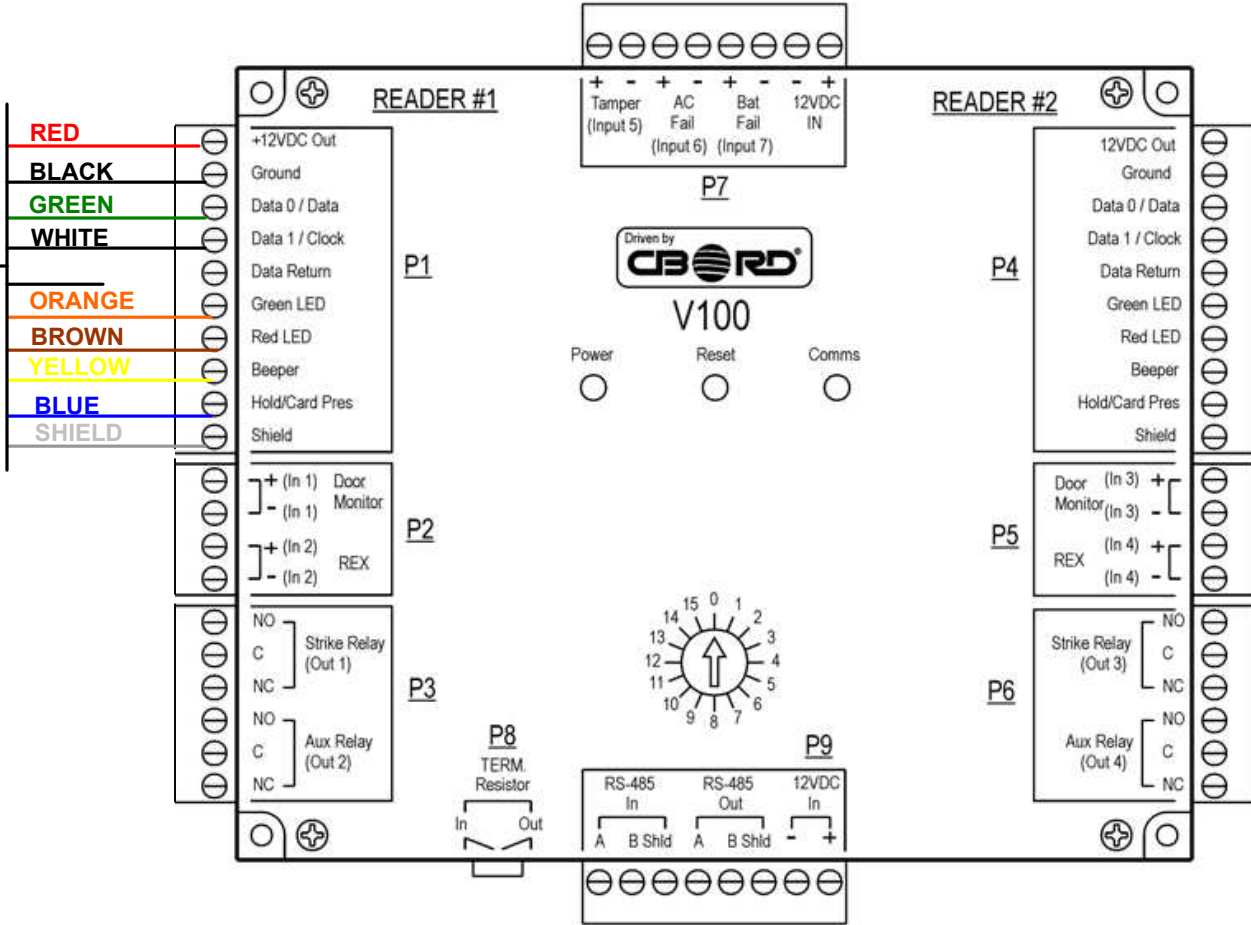


Mercury Security MR-5
Mag. Stripe Reader, 12V





Maxi-Prox



MR5 CARD READER



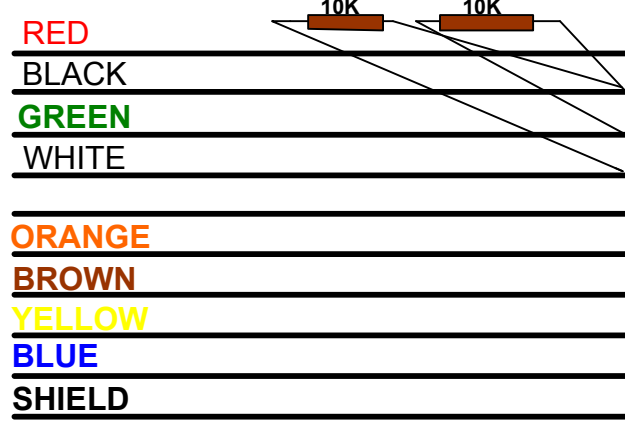
+ 12VDC
 GROUND
 DATA 0 / DATA
 DATA 1 / CLOCK
 DATA RETURN
 GREEN LED
 RED LED
 BEEPER
 HOLD / CARD PRES
 SHIELD

SQUADRON PANEL



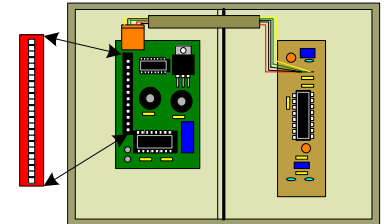
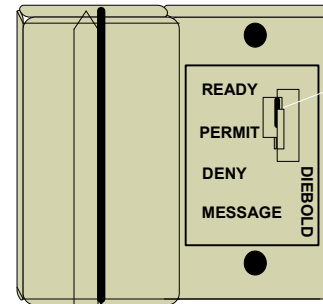
Card Readers1

A1000

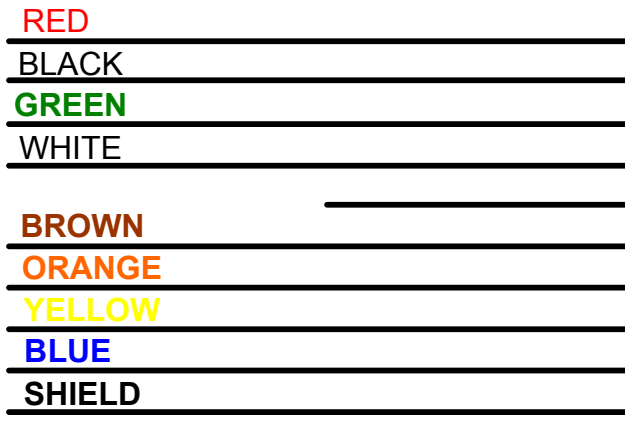


+ 12VDC
 GROUND
 DATA 0 / DATA
 DATA 1 / CLOCK
 DATA RETURN
 GREEN LED
 RED LED
 BEEPER
 HOLD / CARD PRES
 SHIELD

SQUADRON PANEL



HID PROX POINT



+ 12VDC
 GROUND
 DATA 0 / DATA
 DATA 1 / CLOCK
 DATA RETURN
 GREEN LED
 RED LED
 BEEPER
 HOLD / CARD PRES
 SHIELD

SQUADRON PANEL



iCLASS PROX

RED

BLACK

GREEN

WHITE

ORANGE

BROWN

YELLOW

BLUE

SHIELD



To 12V DC Power Supply

+ 12VDC SQUADRON PANEL

GROUND

DATA 0 / DATA

DATA 1 / CLOCK

DATA RETURN

GREEN LED

RED LED

BEEPER

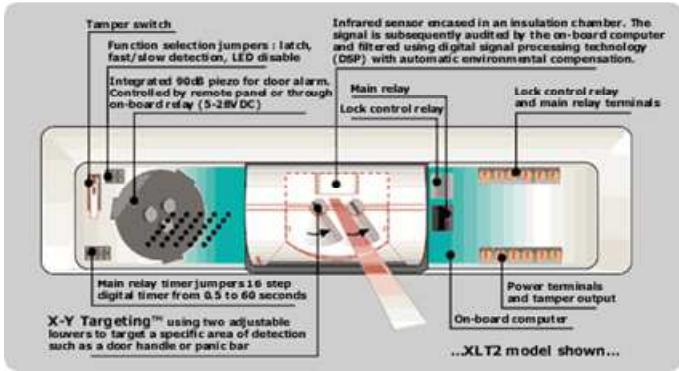
HOLD / CARD PRES

SHIELD





T-REX



REQUEST to EXIT PIR



REX



REQUEST to EXIT PIR



MOTION DETECTOR



FLUSH MOUNT DOOR CONTACT



SURFACE MOUNT DOOR CONTACT



GLASS BREAK DETECTOR



MOTION DETECTOR

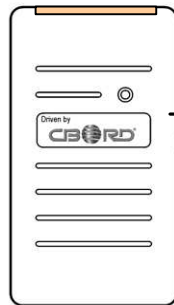


Local Horn w Keyswitch

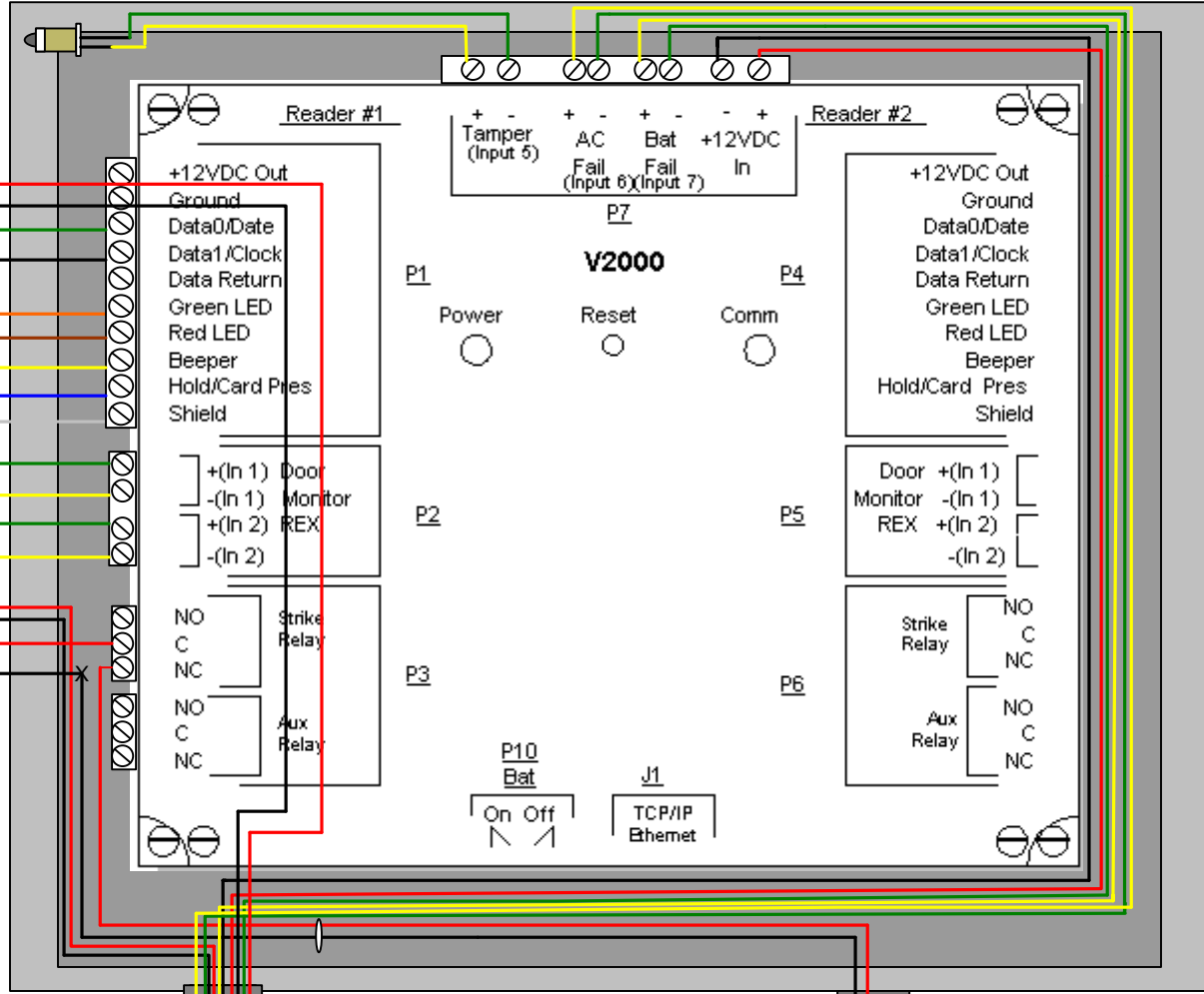


HOLDUP BUTTON

HID iClass Reader

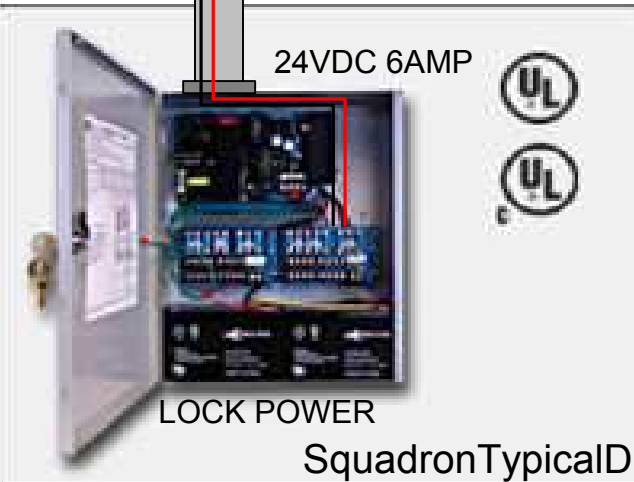
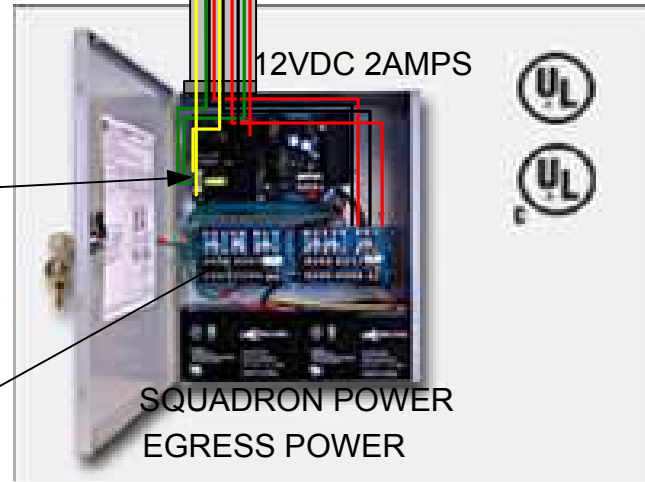
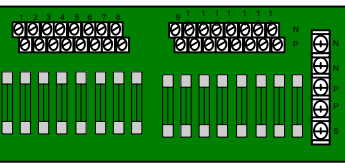
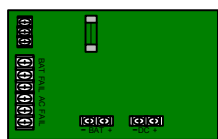
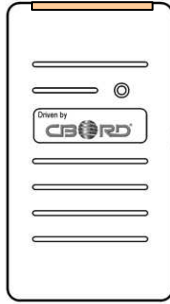


- RED
- BLACK
- GREEN
- WHITE
- ORANGE
- BROWN
- YELLOW
- BLUE
- GRAY

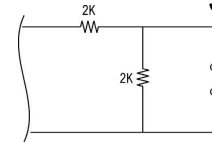
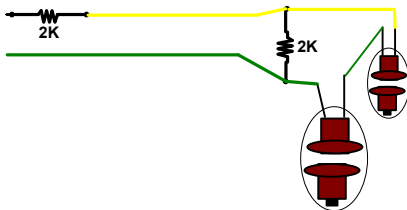
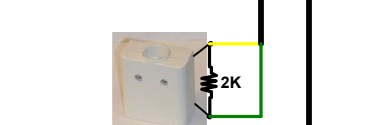
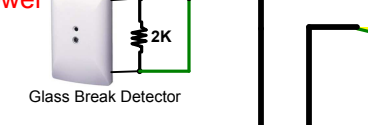
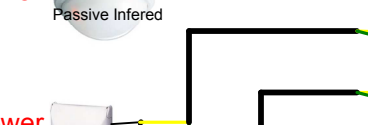
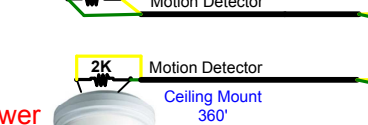
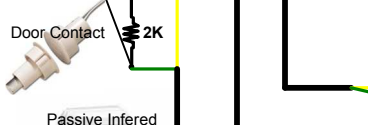
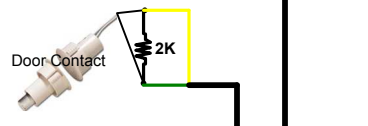
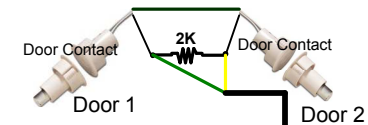


V2000

HID iClass Reader



Double Doors

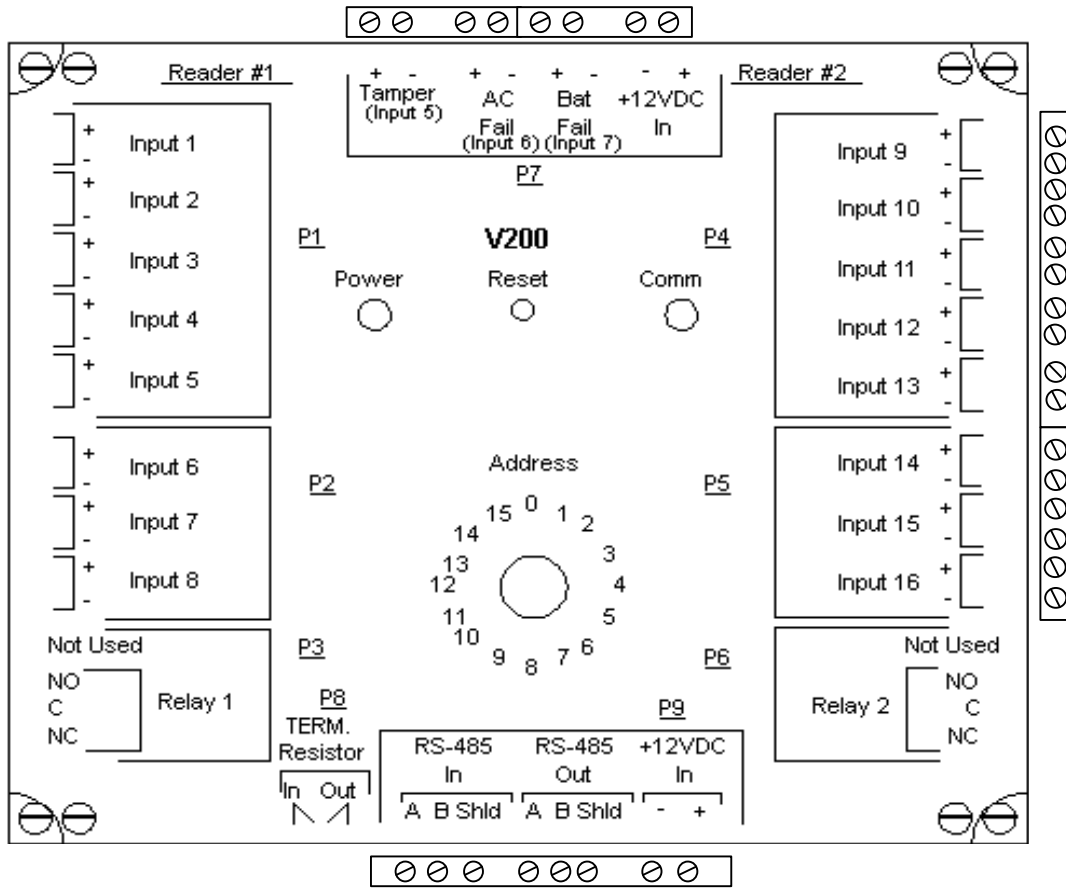


Supervised Inputs

Requires Power

Requires Power

Requires Power



Alarm Devices

