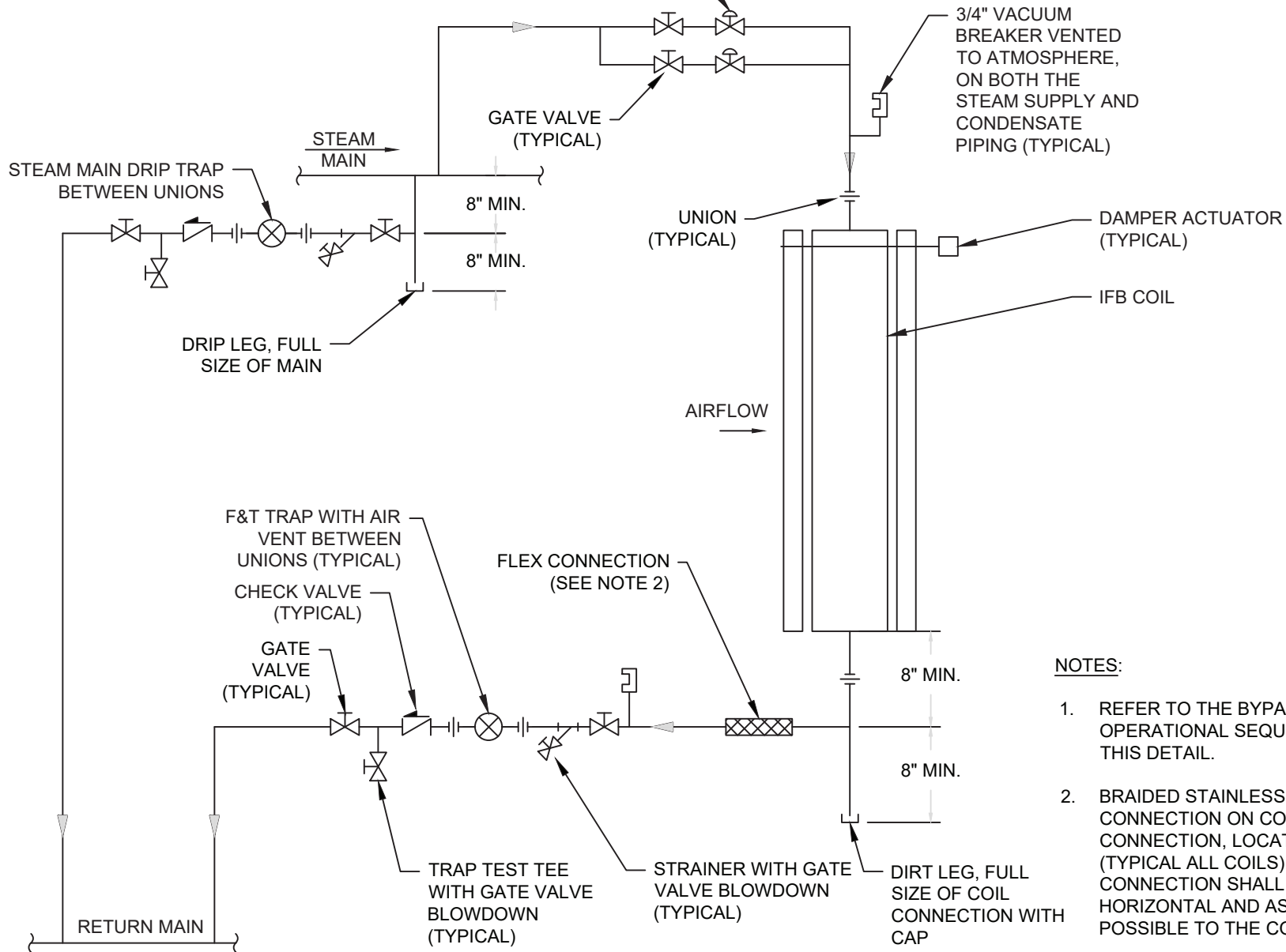
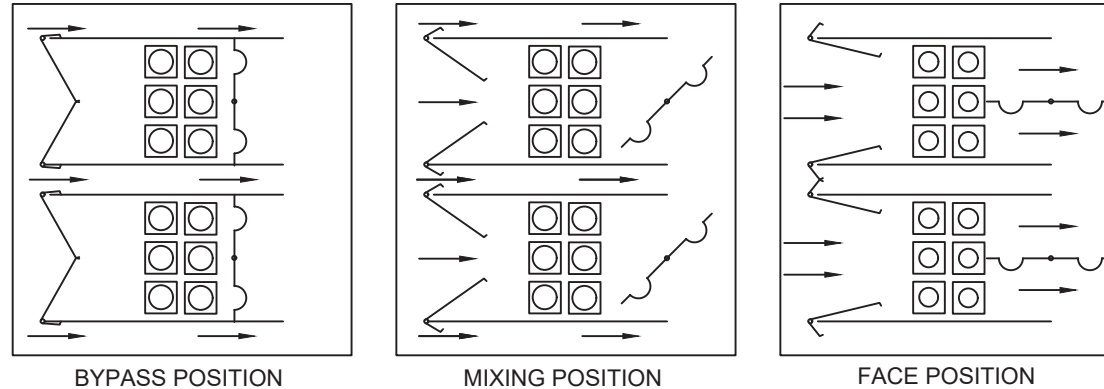


MODULATING 1/3 - 2/3 CONTROL VALVE ARRANGEMENT, TYPICAL ALL IFB COILS. ARRANGE VALVES IN THE SAME HORIZONTAL PLANE.



**NOTES:**

1. REFER TO THE BYPASS POSITIONS AND OPERATIONAL SEQUENCE ON PAGE 2 OF THIS DETAIL.
2. BRAIDED STAINLESS STEEL FLEX CONNECTION ON CONDENSATE CONNECTION, LOCATE IN HORIZONTAL, (TYPICAL ALL COILS). FLEXIBLE CONNECTION SHALL BE PLACED HORIZONTAL AND AS CLOSE AS POSSIBLE TO THE COIL CONNECTION.



OPERATIONAL SEQUENCE:

1. VT USES A 1/3 - 2/3 STEAM CONTROL VALVE ARRANGEMENT ON ALL IFB COILS.
2. WHEN ENTERING AIR IS AT OR ABOVE THE LEAVING COIL TEMPERATURE SET POINT, STEAM CONTROL VALVES ARE CLOSED AND DAMPERS ARE IN THE BYPASS POSITION.
3. WHEN ENTERING AIR IS ABOVE 40°F AND BELOW THE LEAVING COIL TEMPERATURE SET POINT, THE CONTROL VALVES SHALL MODULATE TO MAINTAIN THE LEAVING COIL TEMPERATURE SET POINT. 1/3 VALVE SHALL OPERATE FIRST. IF THE 1/3 VALVE IS MORE THAN 90% OPEN, MODULATE 2/3 VALVE OPEN AND CLOSE THE 1/3 VALVE. IF THE 2/3 VALVE IS MORE THAN 90% OPEN, OPEN BOTH VALVES AND MODULATE. DAMPERS ARE IN THE FACE POSITION.
4. WHEN ENTERING AIR IS 40°F OR BELOW, BOTH THE 1/3 AND 2/3 CONTROL VALVES ARE FULLY OPEN TO THE COIL. DAMPERS ARE IN MIXING POSITION TO MAINTAIN LEAVING COIL TEMPERATURE SET POINT.