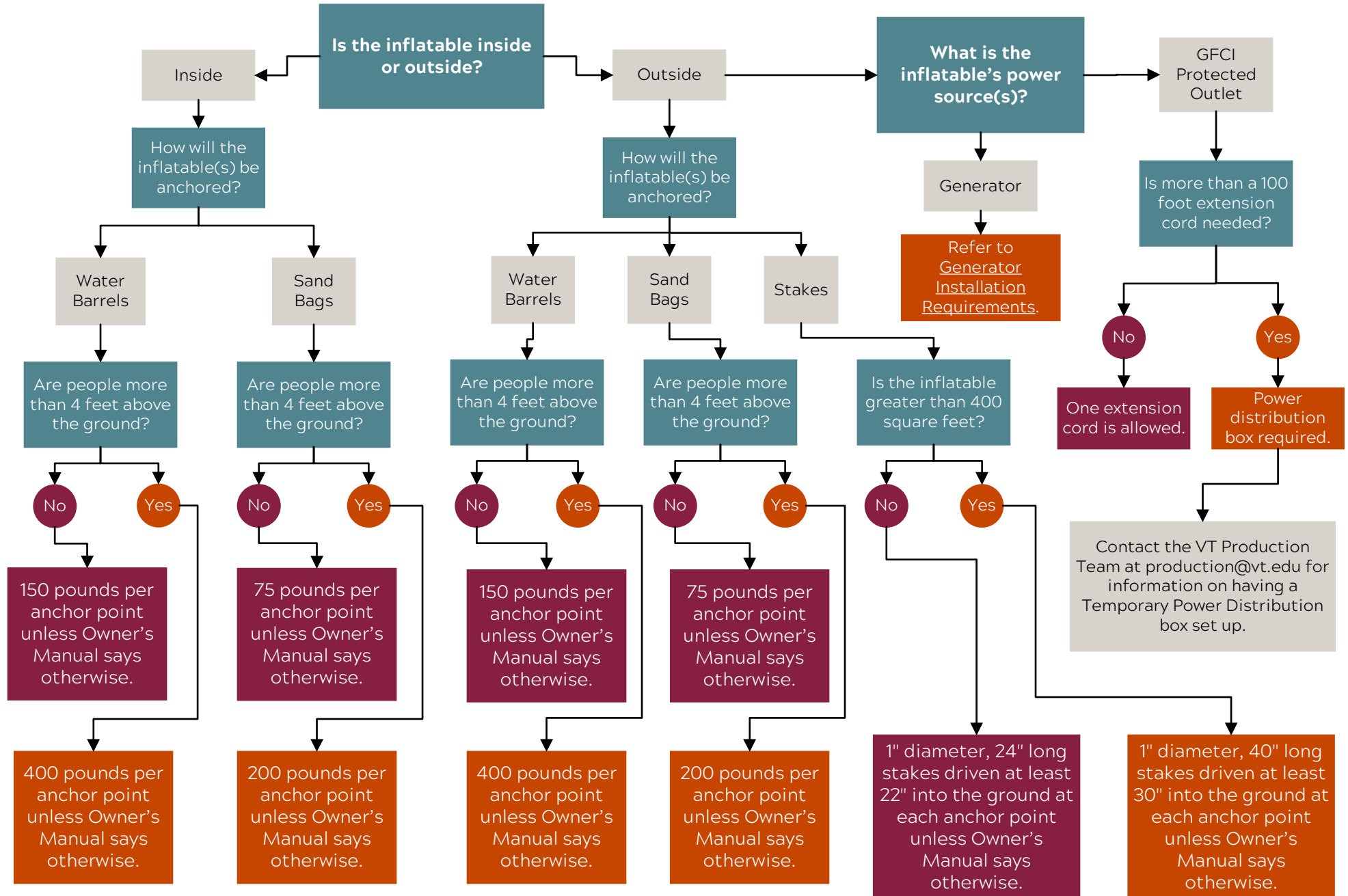




Inflatable General Installation Requirements



*** See below for additional requirements and specific information on inflatables.

Inflatables:

1. Secure all inflatables per the manufacturer's installation instructions.
2. All extension cords and blower motor cords shall not have any damaged insulation and shall have the ground stud in the plug connector.
3. Secure all extension cords to minimize tripping hazards.
4. If using a generator, the blower motors shall be a minimum of 15 feet from the generator.
5. Extension cords shall not be connected to each other (daisy-chained). Distribution boxes are required if more than one extension cord length is needed.