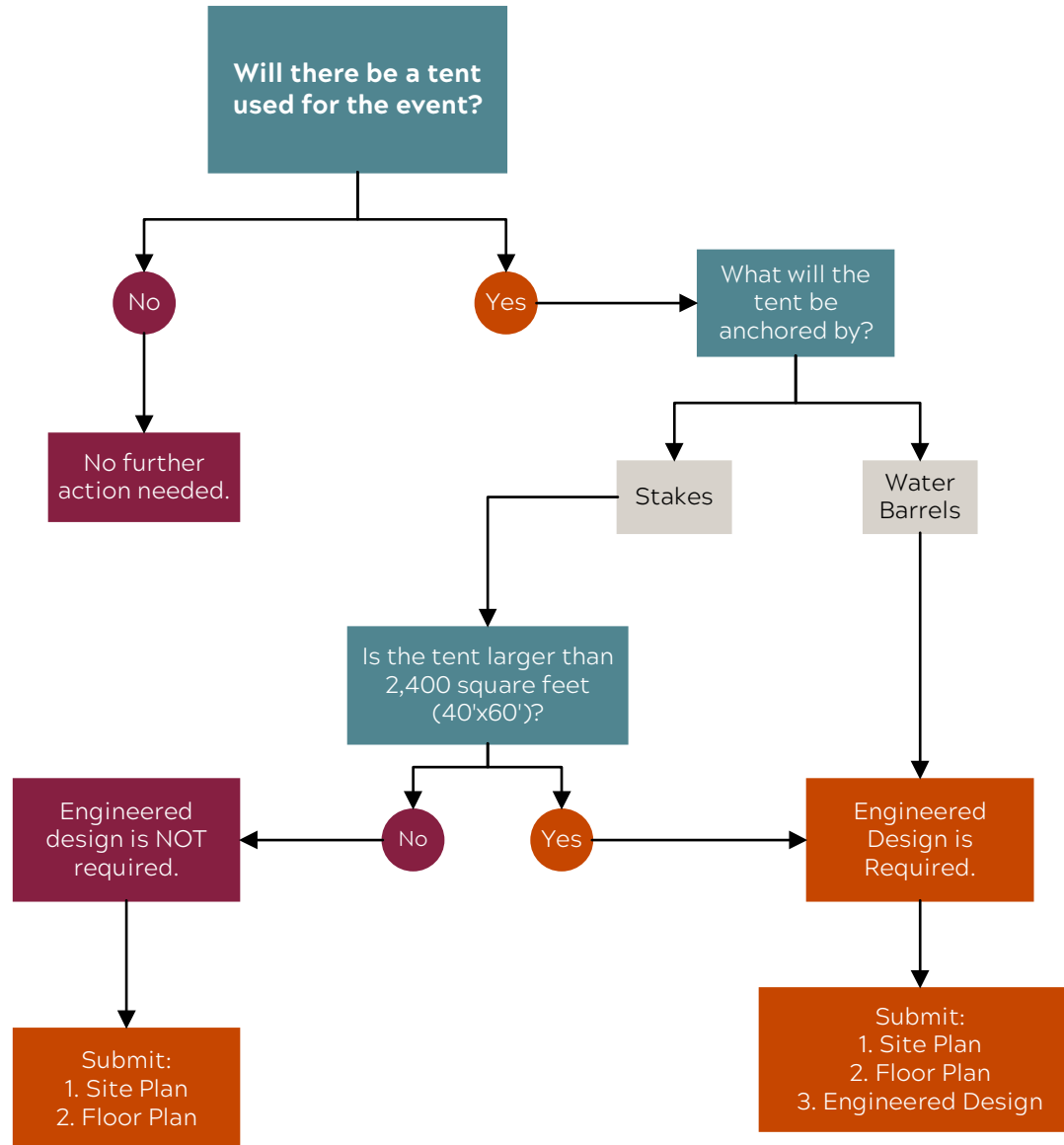




## Tent General Installation Requirements



\*\*\* See below for additional requirements and specific information on tents.

**Tents:**

1. Provide verification at the time of inspection that the membrane appurtenances, side-walls, drops, bunting, and other decorative materials are composed of materials meeting the flame propagation performance criteria of NFPA 701 or have been treated with a flame retardant in an approved manner and provide the required certification accordingly (e.g. date the fabric was last treated, trade name or kind of chemical used in the treatment, name of the person or firm treating the material, name of the testing agency and test standard by which the fabric was tested).
2. Tents and awnings shall be erected and anchored in accordance with the manufacturer's installation instructions and/or industry standards.
3. Ensure tents are located at least 20 feet from other tents, structures, equipment, and plantings.
4. If engineered plans and calculations are not required, then it is the responsibility of the applicant to ensure the tent has been taken down when the forecast (National Weather Service (NWS)) calls for wind gusts over 40 MPH.
5. Ensure aisle widths are a minimum of 4 feet.
6. If sides are put on the tent, a minimum number of exits must be maintained based on the occupant load (see the UBO's office for the required number). Exits shall be spread at equal intervals around the perimeter of the tent.